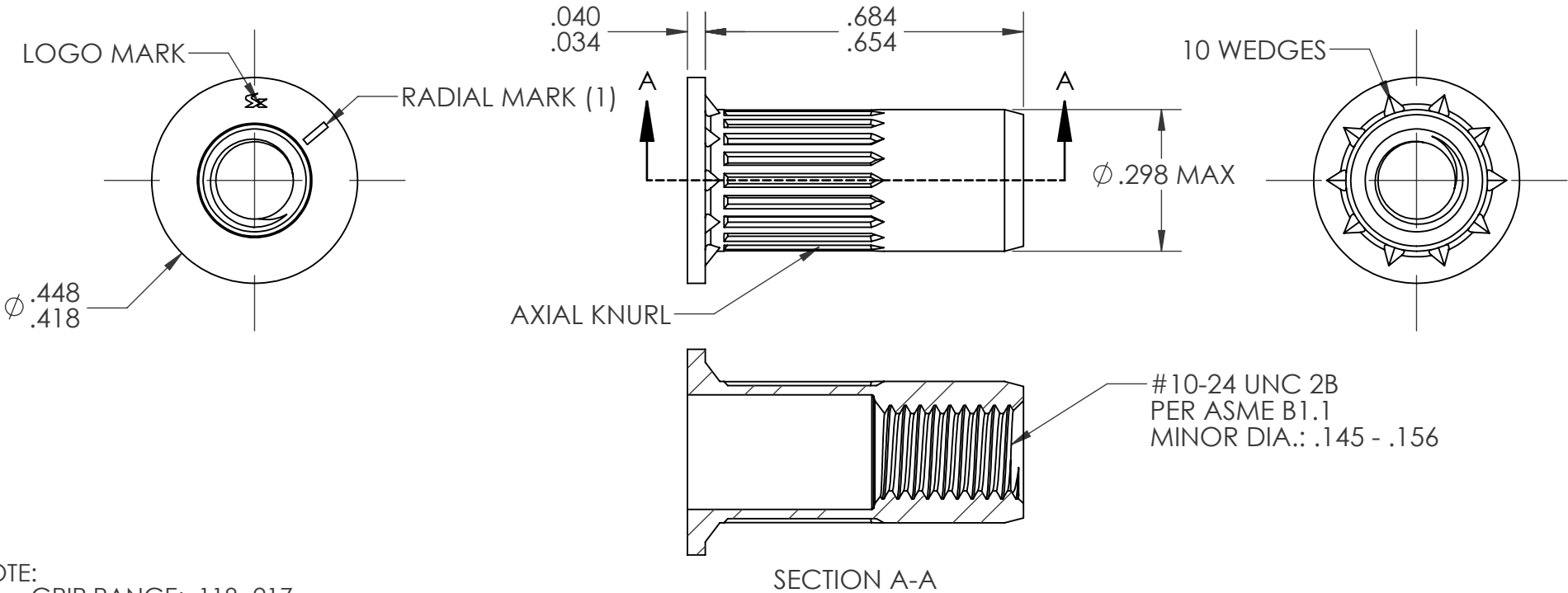



REVISIONS				
REV.	DESCRIPTION	DATE	ECN	INITIALS
A	INITIAL RELEASE	9/3/24	4526	PMZ



- NOTE:
- GRIP RANGE: .118-.217
 - HOLE SIZE: .300 +.006/-.000 AFTER ALL APPLIED FINISHES.
 - INSTALLED LENGTH: .413 MAX.
 - LUBRICATION: NONE
 - INSTALLATION TOOL: SPIN PULL

CUSTOMER APPROVAL: _____				UNLESS OTHERWISE SPECIFIED:			NAME	DATE			
				DIMENSIONS ARE IN INCHES TOLERANCES: ANGULAR: MACH ± 1 BEND ±1 TWO PLACE DECIMAL ±.01 THREE PLACE DECIMAL ±.005		DRAWN	PMZ	9/3/24			
				INTERPRET GEOMETRIC TOLERANCING PER: ASME Y14.5M-1994		CHECKED					
						ENG APPR.	JVK	9/3/24			
DATE: _____						MFG APPR.			TITLE: #10-24 OPEN END LARGE FLANGE OPTISERT		
						Q.A.					
						COMMENTS: E-mail: info@sherex.com www.sherex.com Phone: 866-474-3739 Fax: 716-875-0358					
	PROPRIETARY AND CONFIDENTIAL				MATERIAL 302 STAINLESS					SIZE DWG. NO. A OPT1-1024-217	REV A
	THIS DRAWING, AND THE INFORMATION CONTAINED HEREIN, ARE THE PROPERTY OF SHEREX AND ARE NOT TO BE USED IN ANY MANNER DETRIMENT TO THE INTEREST OF THE COMPANY. SHEREX SOLUTIONS RESERVES THE RIGHT TO REVISE PART/DRAWING WITHOUT NOTICE. UNLESS OTHERWISE SPECIFIED, ALL SPECIFICATIONS REFERENCED ON THIS DRAWING WILL PERTAIN TO THE MOST RECENT AND ACTIVE REVISION.				FINISH NONE						
					NEXT ASSY	USED ON					
		APPLICATION		DO NOT SCALE DRAWING		SCALE: 3:1 WEIGHT: SHEET 1 OF 1					