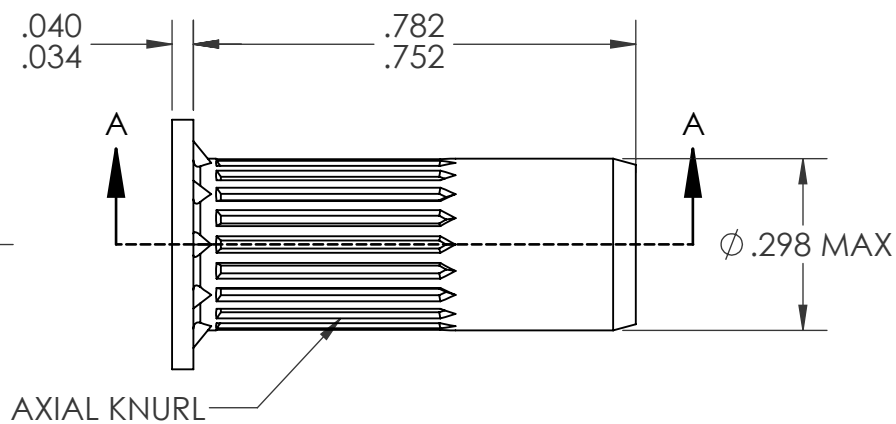
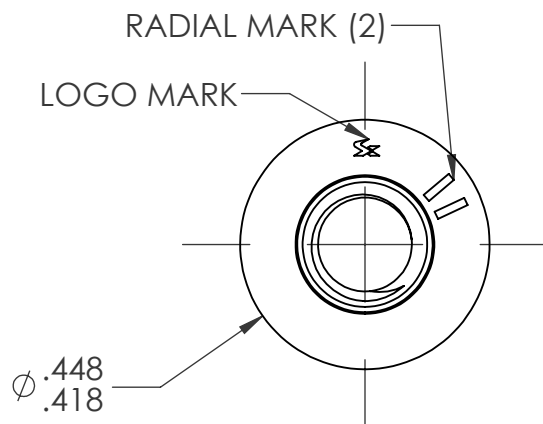
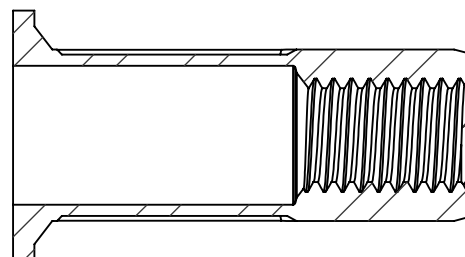
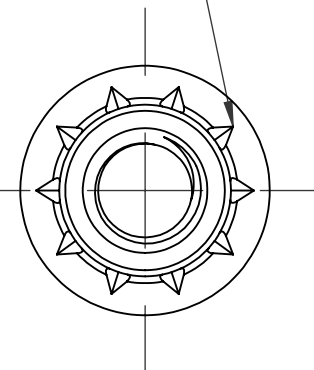


REVISIONS				
REV.	DESCRIPTION	DATE	ECN	INITIALS
A	INITIAL RELEASE	9/3/24	4526	PMZ



10 WEDGES



#10-32 UNF 2B
PER ASME B1.1
MINOR DIA.: .156-.164

NOTE:

- GRIP RANGE: .217-.315
- HOLE SIZE: .300 +.006/-.000 AFTER ALL APPLIED FINISHES.
- INSTALLED LENGTH: .413 MAX.
- LUBRICATION: NONE
- INSTALLATION TOOL: SPIN PULL

SECTION A-A

CUSTOMER APPROVAL:

DATE:

UNLESS OTHERWISE SPECIFIED:

DIMENSIONS ARE IN INCHES
TOLERANCES:
ANGULAR: MACH ±1 BEND ±1
TWO PLACE DECIMAL ±.01
THREE PLACE DECIMAL ±.005

INTERPRET GEOMETRIC
TOLERANCING PER:
ASME Y14.5M-1994

MATERIAL
302 STAINLESS

FINISH
NONE

NAME

DATE

DRAWN

PMZ

9/3/24

CHECKED

ENG APPR.

JVK

9/3/24

MFG APPR.

Q.A.

COMMENTS:

E-mail: info@sherex.com
www.sherex.com
Phone: 866-474-3739
Fax: 716-875-0358



TITLE:

#10-32 OPEN END LARGE
FLANGE OPTISERT

SIZE DWG. NO.

A

OPT1-1032-315

REV

A

SCALE: 3:1 WEIGHT:

SHEET 1 OF 1

PROPRIETARY AND CONFIDENTIAL

THIS DRAWING, AND THE INFORMATION CONTAINED
HEREIN, ARE THE PROPERTY OF SHEREX AND ARE NOT
TO BE USED IN ANY MANNER DETRIMENTAL TO THE
INTEREST OF THE COMPANY.

SHEREX SOLUTIONS RESERVES THE RIGHT TO
REVISE PART/DRAWING WITHOUT NOTICE.

UNLESS OTHERWISE SPECIFIED, ALL SPECIFICATIONS
REFERENCED ON THIS DRAWING WILL PERTAIN TO
THE MOST RECENT AND ACTIVE REVISION.

NEXT ASSY

USED ON

APPLICATION

DO NOT SCALE DRAWING