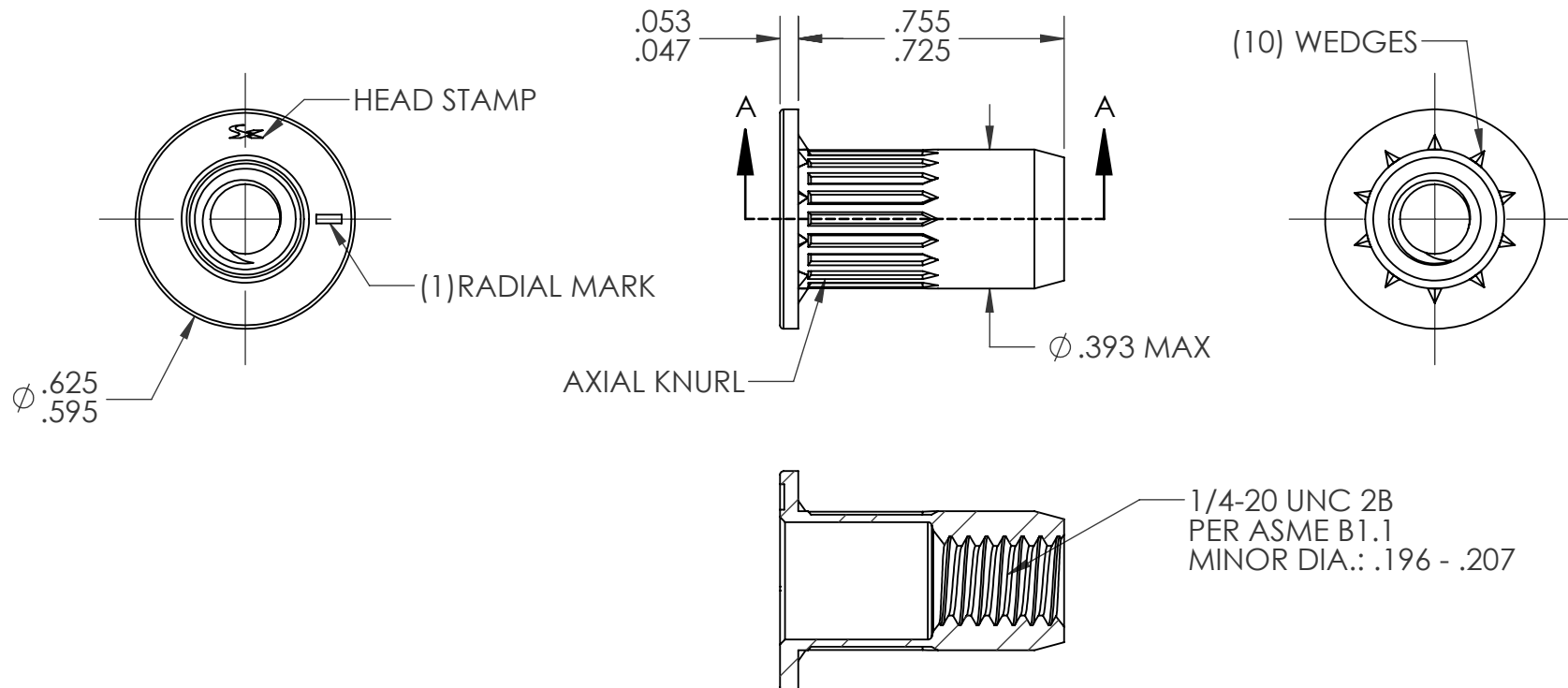


REVISIONS				
REV.	DESCRIPTION	DATE	ECN	INITIAL
A	INITIAL RELEASE	8/16/24	4519	PMZ




SECTION A-A

NOTE:

1. GRIP RANGE: .138 - .236
2. HOLE SIZE: .394 +.006/-0.00 AFTER ALL APPLIED FINISHES.
3. INSTALLED LENGTH: .433 MAX
4. LUBRICATION: NONE
5. INSTALLATION TOOL: SPIN-PULL

PROPRIETARY AND CONFIDENTIAL
THIS DRAWING, AND THE INFORMATION CONTAINED HEREIN, ARE THE PROPERTY OF SHEREX, AND ARE NOT TO BE USED IN ANY MANNER DETRIMENTAL TO THE INTEREST OF THE COMPANY.
SHEREX SOLUTIONS RESERVES THE RIGHT TO REVISE PART/DRAWING WITHOUT NOTICE.

		UNLESS OTHERWISE SPECIFIED:		NAME	DATE	
		DIMENSIONS ARE IN INCHES TOLERANCES: ANGULAR: MACH± 1 BEND ±1 TWO PLACE DECIMAL ±.01 THREE PLACE DECIMAL ±.005	DRAWN	PMZ	8/16/24	
		INTERPRET GEOMETRIC TOLERANCING PER: ASME Y14.5M-1994	CHECKED			
		MATERIAL 302 STAINLESS	ENG APPR.	JVK	8/16/24	
			MFG APPR.			TITLE: 1/4-20 OPEN END LARGE FLANGE OPTISERT
			Q.A.			
			COMMENTS: E-mail: info@sherex.com www.sherex.com Phone: 866-474-3739 Fax: 716-875-0358			
NEXT ASSY	USED ON	FINISH NONE	SIZE DWG. NO.			REV
			A OPT1-2520-236			A
APPLICATION		DO NOT SCALE DRAWING	SCALE: 2:1 WEIGHT:			SHEET 1 OF 1