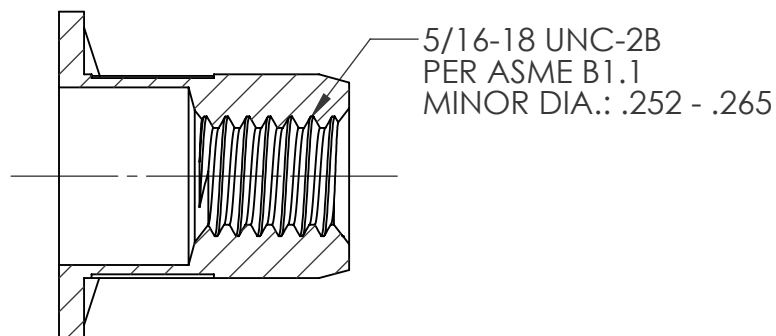
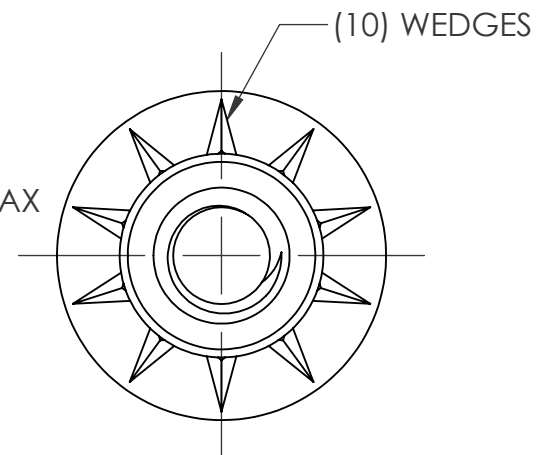
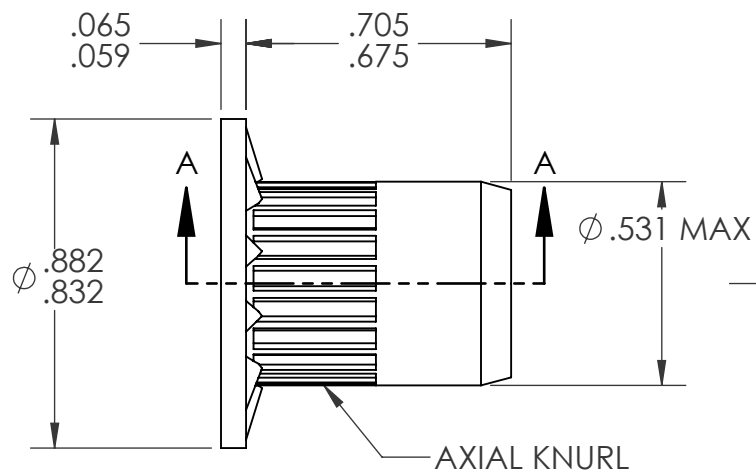
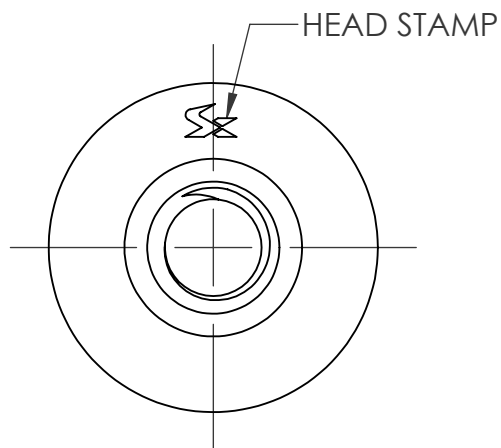


REVISIONS				
REV.	DESCRIPTION	DATE	ECN	INITIAL
A	INITIAL RELEASE	9/3/24	4519	PMZ



SECTION A-A

NOTE:


1. GRIP RANGE: 0.059 - 0.138
2. HOLE SIZE: .531 +.006/-.000 AFTER ALL APPLIED FINISHES.
3. INSTALLED LENGTH: .492 MAX.
4. LUBRICATION: NONE
5. INSTALLATION TOOL: SPIN-PULL

PROPRIETARY AND CONFIDENTIAL

THIS DRAWING, AND THE INFORMATION CONTAINED HEREIN, ARE THE PROPERTY OF SHEREX AND ARE NOT TO BE USED IN ANY MANNER DETRIMENTAL TO THE INTEREST OF THE COMPANY.

SHEREX SOLUTIONS RESERVES THE RIGHT TO REVISE PART/DRAWING WITHOUT NOTICE.

UNLESS OTHERWISE SPECIFIED, ALL SPECIFICATIONS REFERENCED ON THIS DRAWING WILL PERTAIN TO THE MOST RECENT AND ACTIVE REVISION.

		UNLESS OTHERWISE SPECIFIED:		NAME	DATE			
		DIMENSIONS ARE IN INCHES TOLERANCES: ANGULAR: MACH ± 1 BEND ±1 TWO PLACE DECIMAL ±.01 THREE PLACE DECIMAL ±.005	DRAWN	PMZ	8/16/24			
		INTERPRET GEOMETRIC TOLERANCING PER: ASME Y14.5M-1994	CHECKED					
		MATERIAL 302 STAINLESS	ENG APPR.	JVK	8/16/24			
		FINISH NONE	MFG APPR.			TITLE: 5/16-18 OPEN END LARGE FLANGE OPTISERT		
			Q.A.					
			COMMENTS: E-mail: info@sherex.com www.sherex.com Phone: 866-474-3739 Fax: 716-875-0358					
NEXT ASSY	USED ON					SIZE	DWG. NO.	REV
						A	OPT1-3118-138	A
APPLICATION		DO NOT SCALE DRAWING				SCALE: 2:1 WEIGHT:		SHEET 1 OF 1