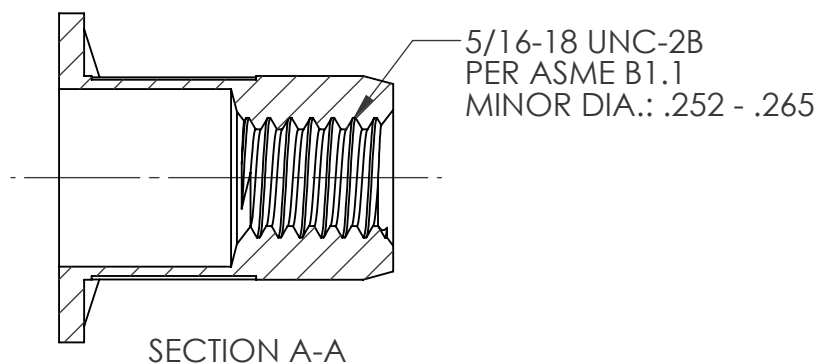
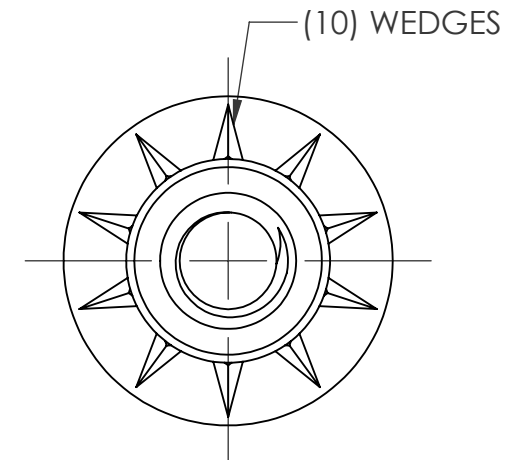
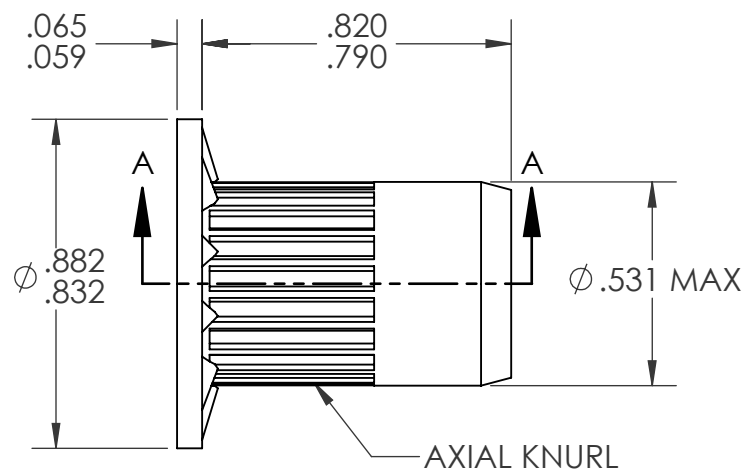
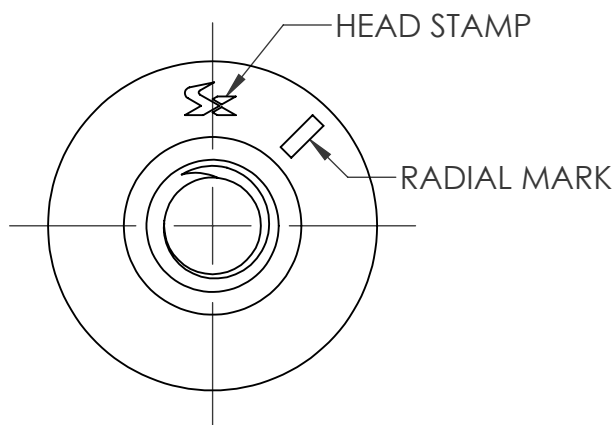


REVISIONS				
REV.	DESCRIPTION	DATE	ECN	INITIAL
A	INITIAL RELEASE	9/3/24	4519	PMZ



NOTE:


1. GRIP RANGE: .138 - .236
2. HOLE SIZE: .531 +.006/- .000 AFTER ALL APPLIED FINISHES.
3. INSTALLED LENGTH: .492 MAX.
4. LUBRICATION: NONE
5. INSTALLATION TOOL: SPIN-PULL

PROPRIETARY AND CONFIDENTIAL

THIS DRAWING, AND THE INFORMATION CONTAINED HEREIN, ARE THE PROPERTY OF SHEREX AND ARE NOT TO BE USED IN ANY MANNER DETRIMENTAL TO THE INTEREST OF THE COMPANY.

SHEREX SOLUTIONS RESERVES THE RIGHT TO REVISE PART/DRAWING WITHOUT NOTICE.

UNLESS OTHERWISE SPECIFIED, ALL SPECIFICATIONS REFERENCED ON THIS DRAWING WILL PERTAIN TO THE MOST RECENT AND ACTIVE REVISION.

		UNLESS OTHERWISE SPECIFIED:		NAME	DATE	
		DIMENSIONS ARE IN INCHES TOLERANCES: ANGULAR: MACH ± 1 BEND ± 1 TWO PLACE DECIMAL ± .01 THREE PLACE DECIMAL ± .005		DRAWN	PMZ	
		INTERPRET GEOMETRIC TOLERANCING PER: ASME Y14.5M-1994		CHECKED		
		MATERIAL 302 STAINLESS		ENG APPR.	JVK	
		FINISH NONE		MFG APPR.		TITLE: 5/16-18 OPEN END LARGE FLANGE OPTISERT
				Q.A.		
				COMMENTS: E-mail: info@sherex.com www.sherex.com Phone: 866-474-3739 Fax: 716-875-0358		SIZE DWG. NO. A OPT1-3118-236
						REV A
						SCALE: 2:1 WEIGHT: SHEET 1 OF 1