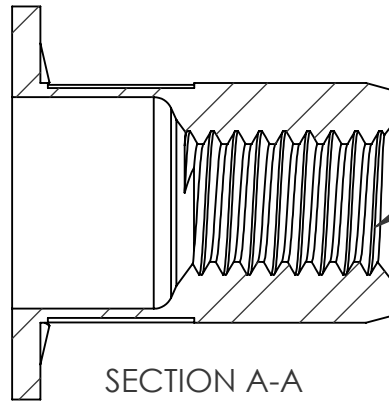
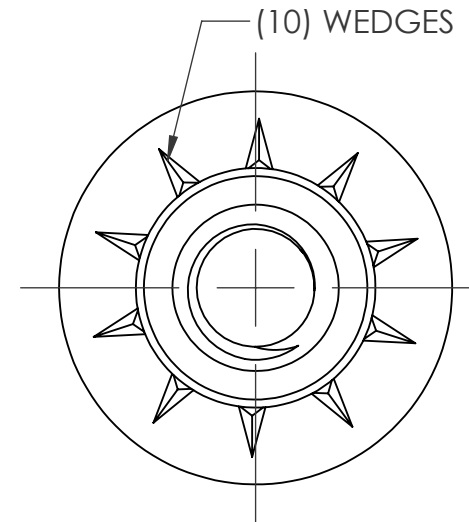
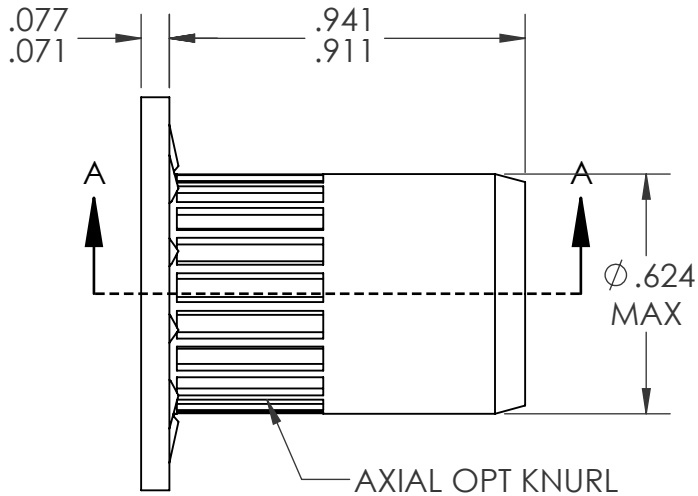
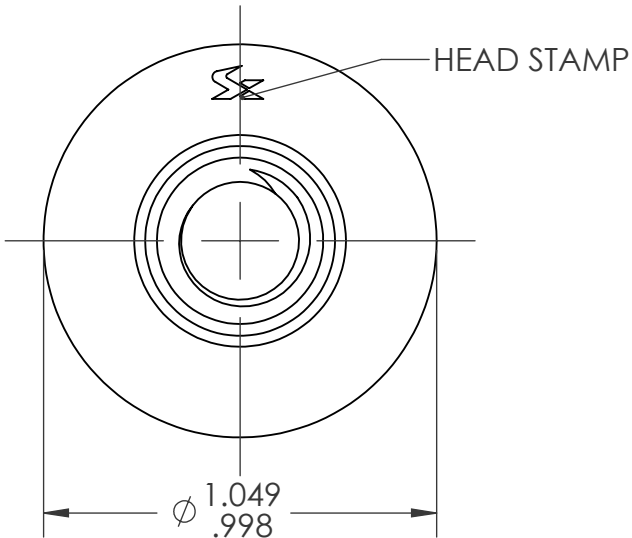


REVISIONS				
REV.	DESCRIPTION	DATE	ECN	INITIAL
A	INITIAL RELEASE	2/19/25	4605	JLC
B	UPDATED GRIP RANGE	7/24/2025	4684	EAK



3/8-16 UNC 2B
PER ASME B1.1
MINOR DIA.: .307 - .321

- NOTE:
1. GRIP RANGE: .059-.138
 2. HOLE SIZE: .625 +.006/- .000 AFTER ALL APPLIED FINISHES.
 3. INSTALLED LENGTH: .728 MAX.
 4. LUBRICATION: NONE
 5. INSTALLATION TOOL: SPIN-PULL

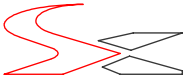
PROPRIETARY AND CONFIDENTIAL

THIS DRAWING, AND THE INFORMATION CONTAINED HEREIN, ARE THE PROPERTY OF SHEREX AND ARE NOT TO BE USED IN ANY MANNER DETRIMENTAL TO THE INTEREST OF THE COMPANY.

SHEREX SOLUTIONS RESERVES THE RIGHT TO REVISE PART/DRAWING WITHOUT NOTICE.

UNLESS OTHERWISE SPECIFIED, ALL SPECIFICATIONS REFERENCED ON THIS DRAWING WILL PERTAIN TO THE MOST RECENT AND ACTIVE REVISION.

		UNLESS OTHERWISE SPECIFIED:		NAME	DATE
		DIMENSIONS ARE IN INCHES TOLERANCES: ANGULAR: MACH ± 1 BEND ± 1 TWO PLACE DECIMAL $\pm .01$ THREE PLACE DECIMAL $\pm .005$		DRAWN	JLC 1/23/25
		INTERPRET GEOMETRIC TOLERANCING PER: ASME Y14.5M-1994		CHECKED	
		MATERIAL 302 STAINLESS		ENG APPR.	JVK 1/23/25
		FINISH NONE		MFG APPR.	
NEXT ASSY	USED ON			Q.A.	
APPLICATION		DO NOT SCALE DRAWING		COMMENTS: E-mail: info@sherex.com www.sherex.com Phone: 866-474-3739 Fax: 716-875-0358	

			TITLE:		
			3/8-16 UNC OPEN END LARGE FLANGE OPTISERT		
SIZE	DWG. NO.			REV	
A	OPT1-3716-138			B	
SCALE: 2:1		WEIGHT:		SHEET 1 OF 1	