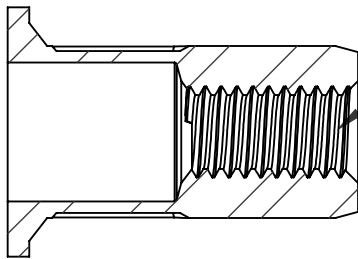
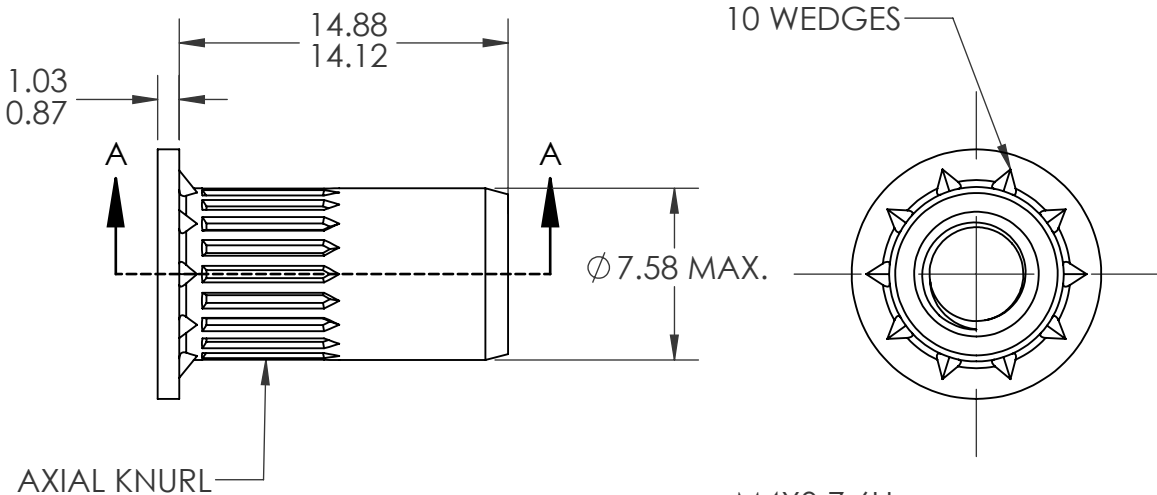
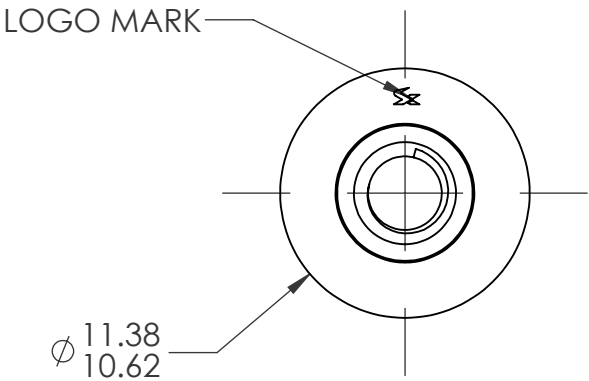



REVISIONS				
REV.	DESCRIPTION	DATE	ECN	INITIAL
A	INITIAL RELEASE	8/16/24	4526	PMZ



M4X0.7 6H
PER ASME B1.13M
MINOR DIA.: 3.24-3.42

- NOTE:
- 1. GRIP RANGE: 1.5 - 3.0
 - 2. HOLE SIZE: 7.60 +0.15-0.00 AFTER ALL APPLIED FINISHES.
 - 3. INSTALLED LENGTH: 10.5 MAX.
 - 4. LUBRICATION: NONE
 - 5. INSTALLATION TOOL: SPIN PULL

CUSTOMER APPROVAL: _____				UNLESS OTHERWISE SPECIFIED:		NAME	DATE		
				DIMENSIONS ARE IN MILLIMETERS TOLERANCES: ANGULAR: MACH ± 1 BEND ±1 ONE PLACE DECIMAL ±0.3 TWO PLACE DECIMAL ±0.08		DRAWN	PMZ		8/16/24
DATE: _____				INTERPRET GEOMETRIC TOLERANCING PER: ASME Y14.5M-1994		CHECKED			TITLE: M4 OPEN END LARGE FLANGE OPTISERT
				MATERIAL 302 STAINLESS		ENG APPR.	JVK		
		MFG APPR.				SIZE DWG. NO. A OPT1-470-3.0	REV A		
		Q.A.							
				COMMENTS: E-mail: info@sherex.com www.sherex.com Phone: 866-474-3739 Fax: 716-875-0358			SHEET 1 OF 1		
	PROPRIETARY AND CONFIDENTIAL THIS DRAWING, AND THE INFORMATION CONTAINED HEREIN, ARE THE PROPERTY OF SHEREX AND ARE NOT TO BE USED IN ANY MANNER DETRIMENT TO THE INTEREST OF THE COMPANY. SHEREX SOLUTIONS RESERVES THE RIGHT TO REVISE PART/DRAWING WITHOUT NOTICE. UNLESS OTHERWISE SPECIFIED, ALL SPECIFICATIONS REFERENCED ON THIS DRAWING WILL PERTAIN TO THE MOST RECENT AND ACTIVE REVISION.	NEXT ASSY	USED ON	FINISH NONE					
		APPLICATION		DO NOT SCALE DRAWING					