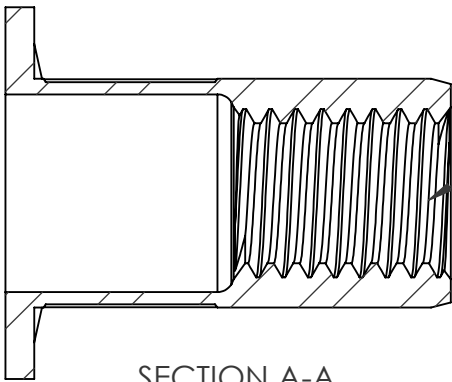
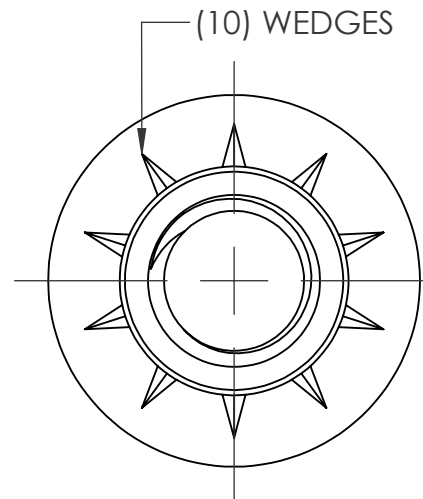
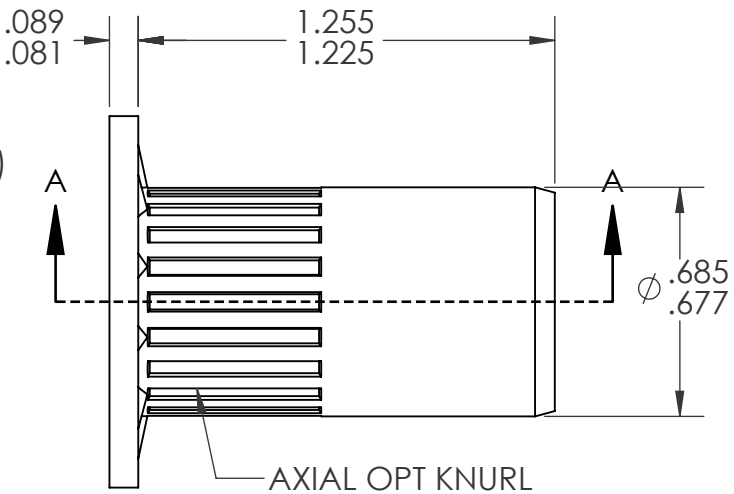
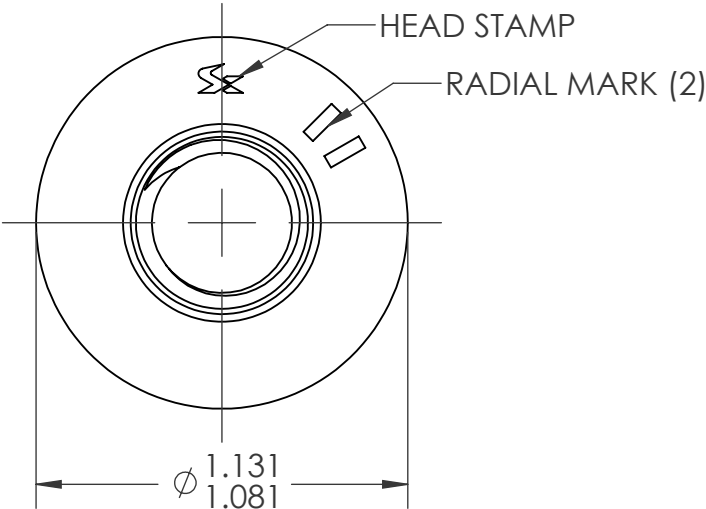


REVISIONS				
REV.	DESCRIPTION	DATE	ECN	INITIAL
A	INITIAL RELEASE	2/20/25	4605	JLC
B	UPDATED HEAD TOLERANCE	7/24/2025	4684	EAK



1/2-13 UNC 2B
PER ASME B1.1
MINOR DIA.: .417 - .434

- NOTE:
- GRIP RANGE: .236 - .335
 - HOLE SIZE: .687 +.006/-0.000 AFTER ALL APPLIED FINISHES.
 - INSTALLED LENGTH: .886 REF
 - LUBRICATION: NONE
 - INSTALLATION TOOL: SPIN-PULL

PROPRIETARY AND CONFIDENTIAL

THIS DRAWING, AND THE INFORMATION CONTAINED HEREIN, ARE THE PROPERTY OF SHEREX AND ARE NOT TO BE USED IN ANY MANNER DETRIMENTAL TO THE INTEREST OF THE COMPANY.

SHEREX SOLUTIONS RESERVES THE RIGHT TO REVISE PART/DRAWING WITHOUT NOTICE.

UNLESS OTHERWISE SPECIFIED, ALL SPECIFICATIONS REFERENCED ON THIS DRAWING WILL PERTAIN TO THE MOST RECENT AND ACTIVE REVISION.

		UNLESS OTHERWISE SPECIFIED:		NAME	DATE
		DIMENSIONS ARE IN INCHES TOLERANCES: ANGULAR: MACH \pm 1 BEND \pm 1 TWO PLACE DECIMAL \pm .01 THREE PLACE DECIMAL \pm .005	DRAWN	JLC	1/24/25
			CHECKED		
		INTERPRET GEOMETRIC TOLERANCING PER: ASME Y14.5M-1994	ENG APPR.	JVK	1/24/25
			MFG APPR.		
		MATERIAL	Q.A.		
		302 STAINLESS	COMMENTS:		
			E-mail: info@sherex.com		
		FINISH	www.sherex.com		
		NONE	Phone: 866-474-3739		
NEXT ASSY	USED ON		Fax: 716-875-0358		
APPLICATION		DO NOT SCALE DRAWING			



TITLE:
1/2-13 UNC OPEN END LARGE
FLANGE OPTISERT

SIZE	DWG. NO.	REV
A	OPT1-5013-335	B
SCALE 1.75:1		WEIGHT:
		SHEET 1 OF 1