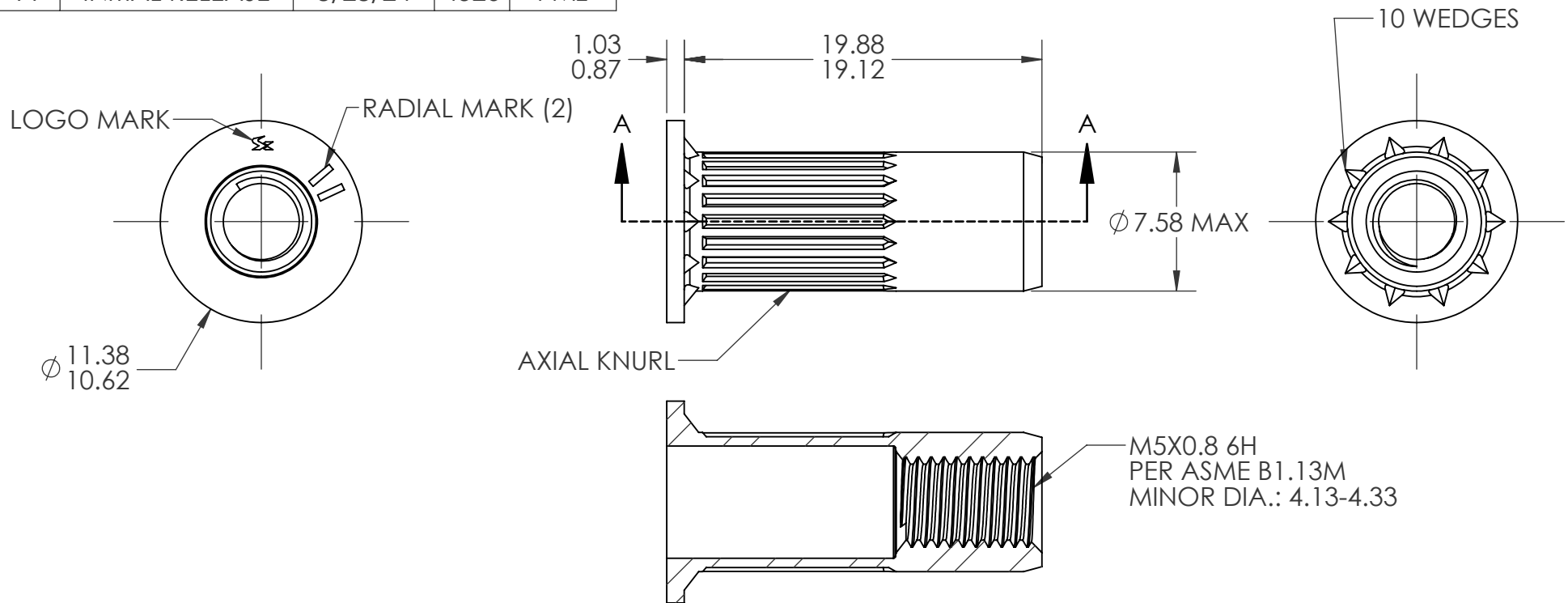


| REVISIONS | | | | |
|-----------|-----------------|---------|------|----------|
| REV. | DESCRIPTION | DATE | ECN | INITIALS |
| A | INITIAL RELEASE | 8/28/24 | 4526 | PMZ |



NOTE:

1. GRIP RANGE: 5.5 - 8.0
2. HOLE SIZE: 7.60 +0.15-0.00 AFTER ALL APPLIED FINISHES.
3. INSTALLED LENGTH: 10.5 MAX.
4. LUBRICATION: NONE
5. INSTALLATION TOOL: SPIN PULL

CUSTOMER APPROVAL:

DATE:

UNLESS OTHERWISE SPECIFIED:

DIMENSIONS ARE IN MILLIMETERS
TOLERANCES:
ANGULAR: MACH ± 1 BEND ± 1
ONE PLACE DECIMAL ± 0.3
TWO PLACE DECIMAL ± 0.08

INTERPRET GEOMETRIC
TOLERANCING PER:
ASME Y14.5M-1994

MATERIAL

302 STAINLESS

FINISH

NONE

NAME

PMZ

DATE

8/28/24

DRAWN

CHECKED

ENG APPR.

MFG APPR.

Q.A.

JVK

8/28/24

COMMENTS:

E-mail: info@sherex.com

www.sherex.com

Phone: 866-474-3739

Fax: 716-875-0358



TITLE:

M5 OPEN END LARGE
FLANGE OPTISERT

SIZE DWG. NO.

A OPT1-580-8.0

REV

A

SCALE: 3:1 WEIGHT:

SHEET 1 OF 1

PROPRIETARY AND CONFIDENTIAL

THIS DRAWING, AND THE INFORMATION CONTAINED
HEREIN, ARE THE PROPERTY OF SHEREX AND ARE NOT
TO BE USED IN ANY MANNER DETRIMENTAL TO THE
INTEREST OF THE COMPANY.

SHEREX SOLUTIONS RESERVES THE RIGHT TO
REVISE PART/DRAWING WITHOUT NOTICE.

UNLESS OTHERWISE SPECIFIED, ALL SPECIFICATIONS
REFERENCED ON THIS DRAWING WILL PERTAIN TO
THE MOST RECENT AND ACTIVE REVISION.

NEXT ASSY

USED ON

APPLICATION

DO NOT SCALE DRAWING