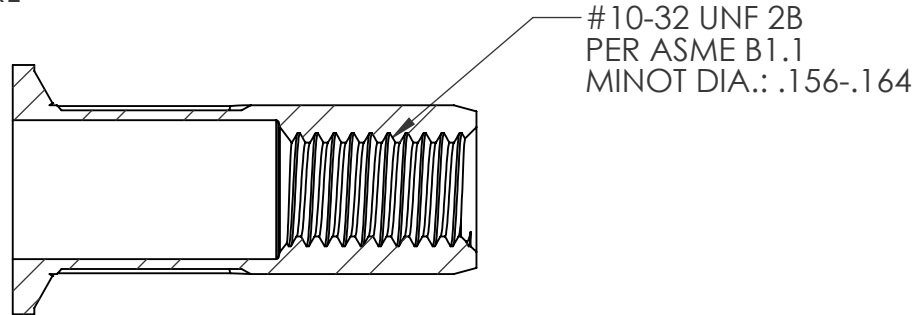
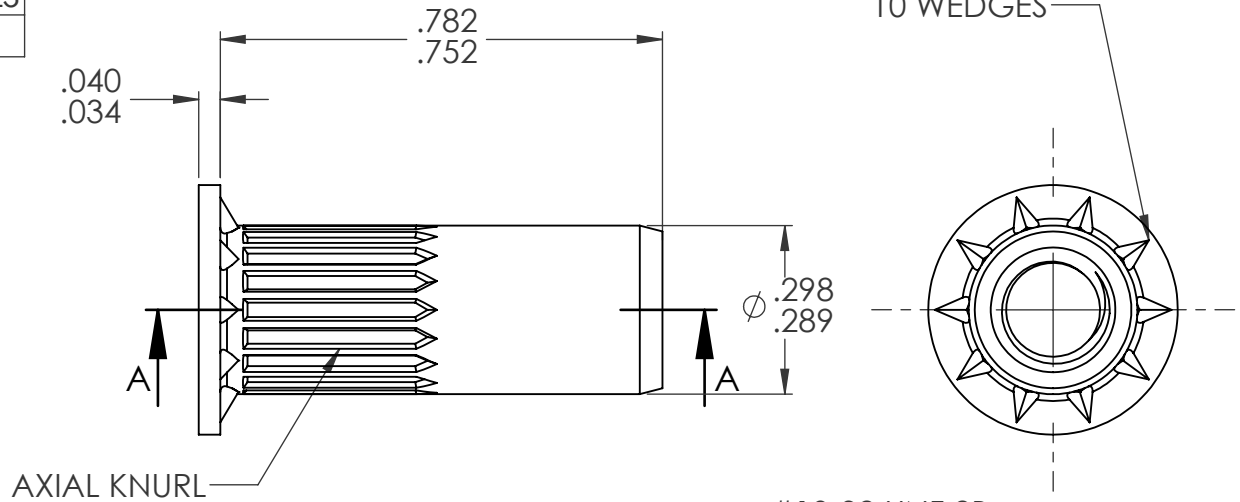
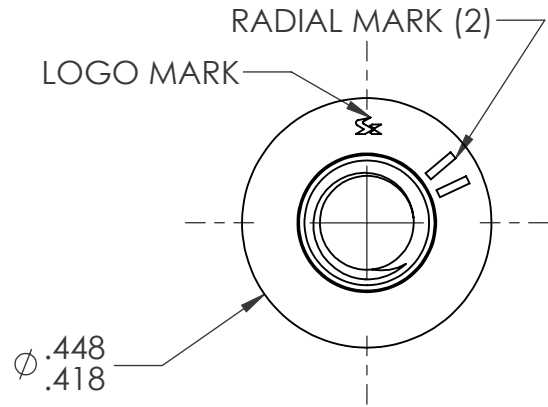



REVISIONS				
REV.	DESCRIPTION	DATE	ECN	INITIALS
A	INITIAL RELEASE	10/7/2020	3692	TDJ



SECTION A-A

NOTE:

- GRIP RANGE: .217-.315
- HOLE SIZE: .300 +.006/-0.000 AFTER ALL APPLIED FINISHES.
- INSTALLED LENGTH: .413 MAX.
- LUBRICATION: NONE
- INSTALLATION TOOL: SPIN PULL

CUSTOMER APPROVAL:				UNLESS OTHERWISE SPECIFIED:		NAME		DATE			
DATE:				DIMENSIONS ARE IN INCHES TOLERANCES: ANGULAR: MACH ±1 BEND ±1 TWO PLACE DECIMAL ±.01 THREE PLACE DECIMAL ±.005		DRAWN		TDJ 10/7/2020			
				INTERPRET GEOMETRIC TOLERANCING PER: ASME Y14.5M-1994		CHECKED		CL 10/7/2020			
				MATERIAL C1008/C1010		ENG APPR.		JVK 10/7/2020		TITLE:	
PROPRIETARY AND CONFIDENTIAL <small>THIS DRAWING, AND THE INFORMATION CONTAINED HEREIN, ARE THE PROPERTY OF SHEREX AND ARE NOT TO BE USED IN ANY MANNER DETRIMENT TO THE INTEREST OF THE COMPANY. SHEREX SOLUTIONS RESERVES THE RIGHT TO REVISE PART/DRAWING WITHOUT NOTICE. UNLESS OTHERWISE SPECIFIED, ALL SPECIFICATIONS REFERENCED ON THIS DRAWING WILL PERTAIN TO THE MOST RECENT AND ACTIVE REVISION.</small>						MFG APPR.				#10-32 OPEN END LARGE FLANGE OPTISERT	
		NEXT ASSY		USED ON		Q.A.					
						COMMENTS:		E-mail: info@sherex.com www.sherex.com Phone: 866-474-3739 Fax: 716-875-0358		SIZE DWG. NO. A OPT2-1032-315 REV A	
		APPLICATION		DO NOT SCALE DRAWING						SCALE: 3:1 WEIGHT: SHEET 1 OF 1	