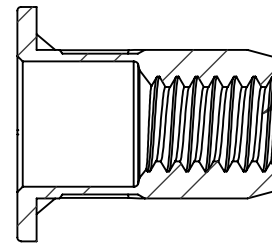
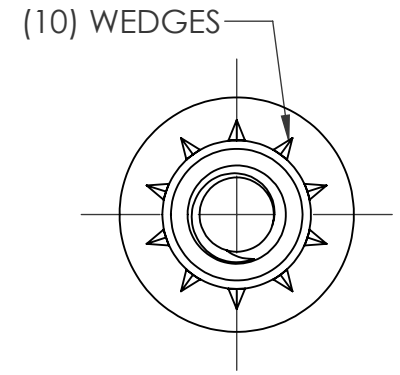
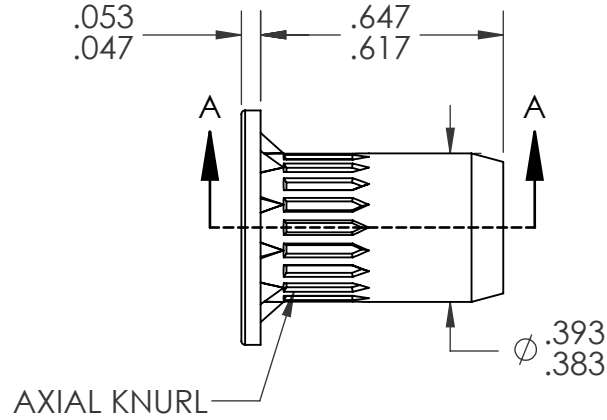
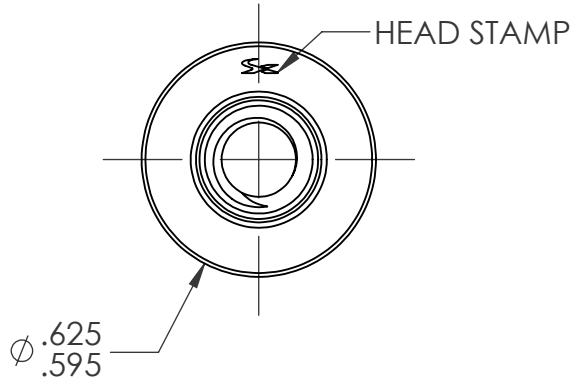


REVISIONS					
REV.	DESCRIPTION	DATE	ECN	INITIAL	
A	INITIAL RELEASE	7/30/2020	3657	ARG	
B	UPDATE GRIP RANGE	9/4/2020	3674	ARG	



1/4-20 UNC 2B
PER ASME B1.1
MINOR DIA.: .196 - .207

SECTION A-A

NOTE:

- GRIP RANGE: .039 - .138
- HOLE SIZE: .394 +.006/-.000 AFTER ALL APPLIED FINISHES.
- INSTALLED LENGTH: .433 MAX
- LUBRICATION: NONE
- INSTALLATION TOOL: SPIN-PULL
- THREADS MEET GRADE 5 PROOF LOAD: 4250lbf PER SAE J995

PROPRIETARY AND CONFIDENTIAL

THIS DRAWING, AND THE INFORMATION CONTAINED HEREIN, ARE THE PROPERTY OF SHEREX AND ARE NOT TO BE USED IN ANY MANNER DETRIMENTAL TO THE INTEREST OF THE COMPANY.
SHEREX SOLUTIONS RESERVES THE RIGHT TO REVISE PART/DRAWING WITHOUT NOTICE.

		UNLESS OTHERWISE SPECIFIED:	NAME	DATE
		DIMENSIONS ARE IN INCHES TOLERANCES: ANGULAR: MACH ± 1 BEND ± 1 TWO PLACE DECIMAL $\pm .01$ THREE PLACE DECIMAL $\pm .005$	DRAWN	ARG 7/30/20
		INTERPRET GEOMETRIC TOLERANCING PER: ASME Y14.5M-1994	CHECKED	
		MATERIAL	ENG APPR.	
		C1008/C1010	MFG APPR.	
		FINISH	Q.A.	
		ZINC PLATE CLEAR TRIVALENT CHROMATE PER SFS-01-001, SC1	COMMENTS:	
NEXT ASSY	USED ON		E-mail: info@sherex.com	
			www.sherex.com	
			Phone: 866-474-3739	
			Fax: 716-875-0358	
APPLICATION		DO NOT SCALE DRAWING		



TITLE:

1/4 - 20 OPEN END LARGE
FLANGE OPTISERT

SIZE DWG. NO.

A OPT2-2520-138

REV

B

SCALE: 2:1 WEIGHT:

SHEET 1 OF 1