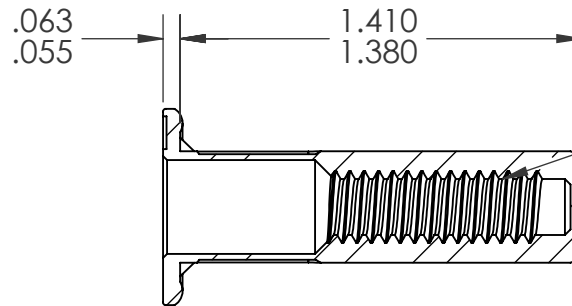
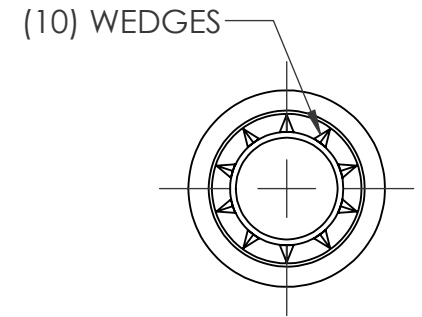
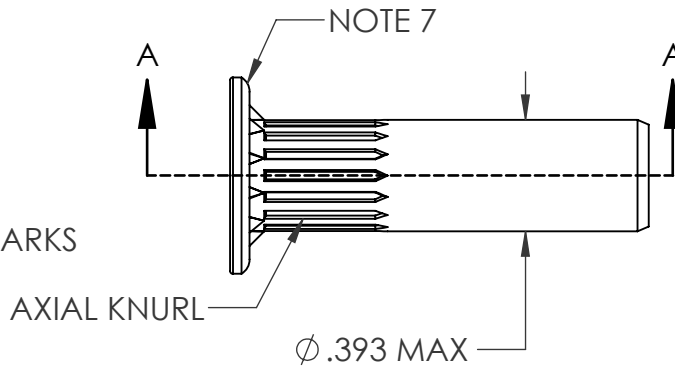
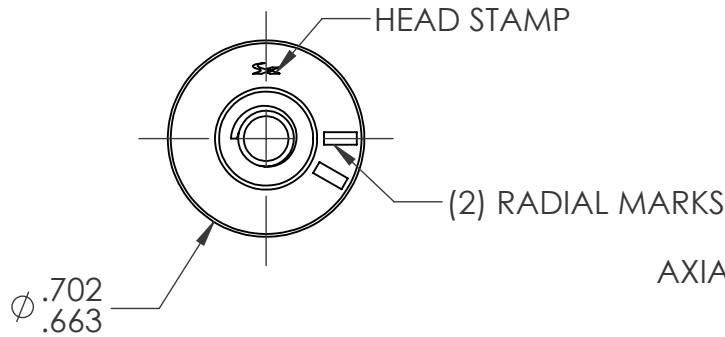
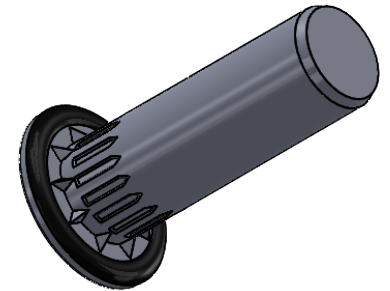


REVISIONS				
REV.	DESCRIPTION	DATE	ECN	INITIALS
A	INITIAL RELEASE	02/08/2023	4193	MRA



1/4"-20 UNC 2B  
PER ASME B1.1  
MINOR DIA.: .196 - .207

SECTION A-A  
SCALE 1.5 : 1



NOTE:

- GRIP RANGE: .236 - .335
- HOLE SIZE: .394 +.006/-.000 AFTER ALL APPLIED FINISHES.
- INSTALLED LENGTH: .994 MAX.
- INSTALLED THREAD DEPTH: .945 MIN. IN MIN. GRIP
- INSTALLATION TOOL: SPIN-PULL
- THREAD MUST MEET GRADE 5 PROOF LOAD PER SAE J995: 4250 lbf.
- DEPOSIT PLASTISOL ALONG OUTER GROOVE OF THE HEAD.

**PROPRIETARY AND CONFIDENTIAL**

THIS DRAWING, AND THE INFORMATION CONTAINED HEREIN, ARE THE PROPERTY OF SHEREX AND ARE NOT TO BE USED IN ANY MANNER DETRIMENTAL TO THE INTEREST OF THE COMPANY.

SHEREX SOLUTIONS RESERVES THE RIGHT TO REVISE PART/DRAWING WITHOUT NOTICE.

		UNLESS OTHERWISE SPECIFIED:		NAME	DATE
		DIMENSIONS ARE IN INCHES TOLERANCES: ANGULAR: MACH: 1 BEND ±1 TWO PLACE DECIMAL ±.01 THREE PLACE DECIMAL ±.005	DRAWN	MRA	2/8/23
		INTERPRET GEOMETRIC TOLERANCING PER: ASME Y14.5M-1994	CHECKED		
		MATERIAL	ENG APPR.	JVK	2/8/23
		C1008/C1010 STEEL	MFG APPR.		
		FINISH	Q.A.		
		ZINC PLATE CLEAR TRIVALENT CHROMATE PER SFS-01-001; SC1	COMMENTS:	E-mail: info@sherex.com www.sherex.com Phone: 866-474-3739 Fax: 716-875-0358	
NEXT ASSY	USED ON				
APPLICATION		DO NOT SCALE DRAWING			



TITLE:

1/4"-20 CLOSED END LARGE  
FLANGE OPTISERT

SIZE DWG. NO.

**A** OPT2-2520-335BS

REV

**A**

SCALE: 3:2 WEIGHT:

SHEET 1 OF 1