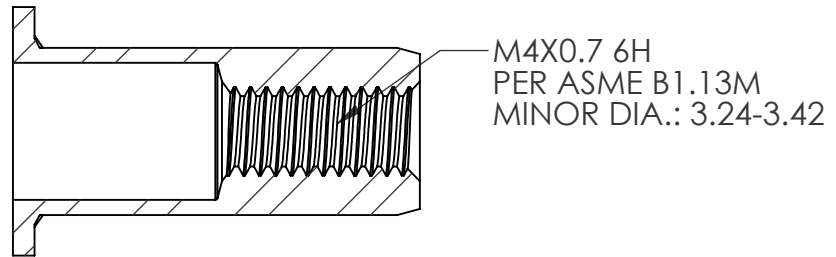
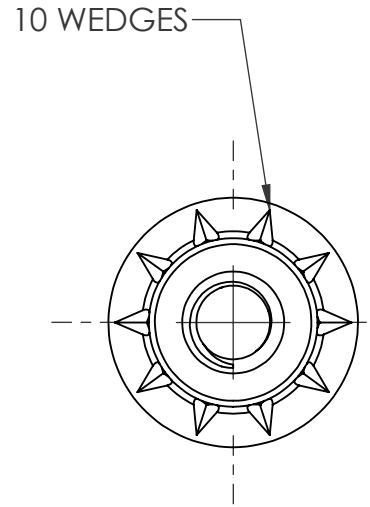
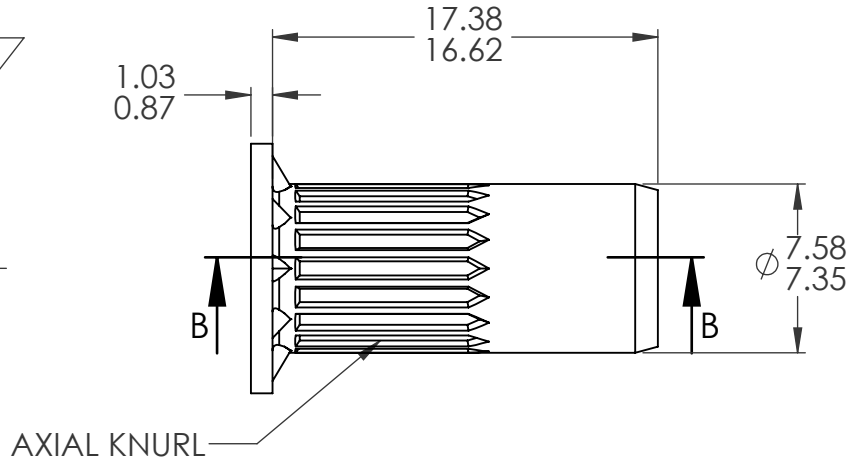
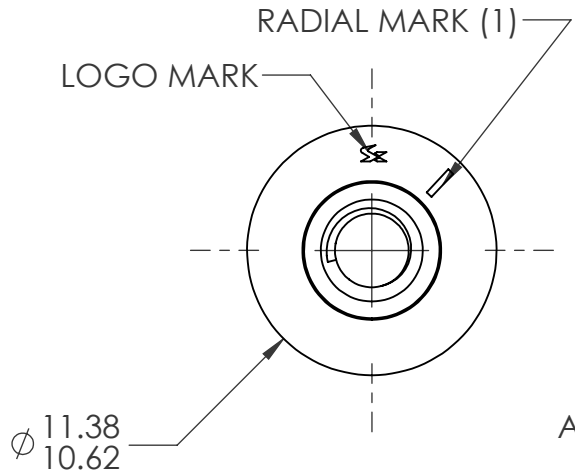


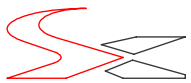
| REVISIONS | | | | |
|-----------|-----------------|-----------|------|----------|
| REV. | DESCRIPTION | DATE | ECN | INITIALS |
| A | INITIAL RELEASE | 10/7/2020 | 3692 | TDJ |



SECTION B-B
SCALE 3 : 1

NOTE:

- GRIP RANGE: 3.0 - 5.5
- HOLE SIZE: 7.60 +0.15-0.00 AFTER ALL APPLIED FINISHES.
- INSTALLED LENGTH: 10.5 MAX.
- LUBRICATION: NONE
- INSTALLATION TOOL: SPIN PULL

| | | | | | | | | | | | | | | | |
|--------------------|--|--|--|---|--|-----------|--|-------------------------|--|-----------|--|---|--|--|--|
| CUSTOMER APPROVAL: | | | | UNLESS OTHERWISE SPECIFIED: | | | | NAME | | DATE | |  | | | |
| DATE: | | | | DIMENSIONS ARE IN MILLIMETERS TOLERANCES: ANGULAR: MACH ± 1 BEND ± 1 ONE PLACE DECIMAL ± 0.3 TWO PLACE DECIMAL ± 0.08 | | DRAWN | | TDJ | | 10/7/2020 | | | | TITLE: M4 OPEN END LARGE FLANGE OPTISERT | |
| | | | | INTERPRET GEOMETRIC TOLERANCING PER: ASME Y14.5M-1994 | | CHECKED | | CL | | 10/7/2020 | | | | | |
| | | | | MATERIAL C1008/C1010 | | ENG APPR. | | JVK | | 10/7/2020 | | SCALE: 3:1 WEIGHT: SHEET 1 OF 1 | | | |
| | | | | FINISH ZINC PLATE CLEAR TRIVALENT CHROMATE PER SFS-01-001; SC1 | | MFG APPR. | | | | | | | | | |
| | | | | APPLICATION | | Q.A. | | | | | | | | | |
| | | | | DO NOT SCALE DRAWING | | COMMENTS: | | E-mail: info@sherex.com | | | | | | | |
| | | | | | | | | www.sherex.com | | | | | | | |
| | | | | | | | | Phone: 866-474-3739 | | | | | | | |
| | | | | | | | | Fax: 716-875-0358 | | | | | | | |