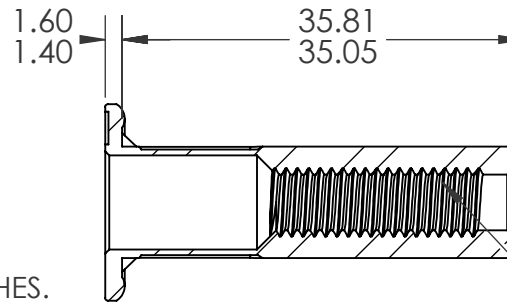
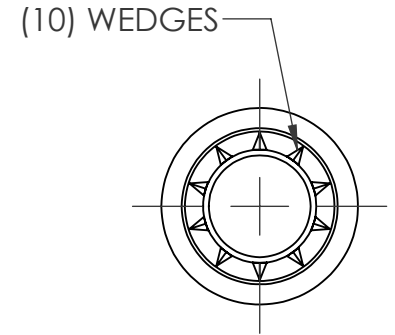
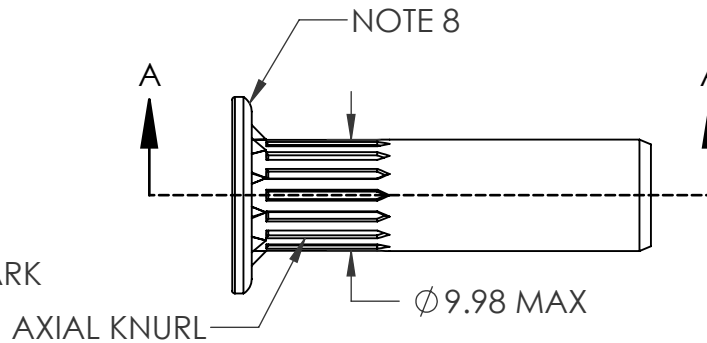
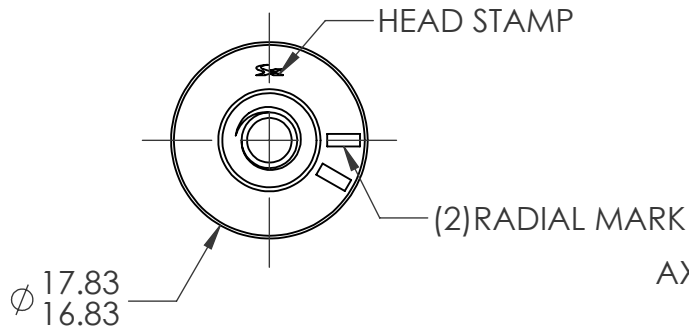


REVISIONS				
REV.	DESCRIPTION	DATE	ECN	INITIALS
A	INITIAL RELEASE	02/08/2023	4193	MRA



M6X1.0 6H
PER ASME B1.13M
MINOR DIA.: 4.92 - 5.15

NOTE:

- GRIP RANGE: 6.0 - 8.5
- HOLE SIZE: 10.00 +0.15/-0.00 AFTER ALL APPLIED FINISHES.
- INSTALLED LENGTH: 26.0 MAX
- INSTALLED THREAD DEPTH:
- LUBRICATION: NONE
- INSTALLATION TOOL: SPIN-PULL
- THREAD MEET CLASS 8 PROOF LOAD: PER 17.2 kN PER ISO 898-2
- DEPOSIT PLASTISOL ALONG OUTER GROOVE OF THE HEAD.

SECTION A-A
SCALE 1.5 : 1

PROPRIETARY AND CONFIDENTIAL
THIS DRAWING, AND THE INFORMATION CONTAINED HEREIN, ARE THE PROPERTY OF SHEREX AND ARE NOT TO BE USED IN ANY MANNER DETRIMENTAL TO THE INTEREST OF THE COMPANY.
SHEREX SOLUTIONS RESERVES THE RIGHT TO REVISE PART/DRAWING WITHOUT NOTICE.

		UNLESS OTHERWISE SPECIFIED:	NAME	DATE
		DIMENSIONS ARE IN MILLIMETERS TOLERANCES: ANGULAR: MACH ± 1 BEND ± 1 ONE PLACE DECIMAL ± 0.3 TWO PLACE DECIMAL ± 0.08	DRAWN	MRA 2/8/23
		INTERPRET GEOMETRIC TOLERANCING PER: ASME Y14.5M-1994	CHECKED	
		MATERIAL	ENG APPR.	JVK 2/8/23
		C1008/C1010 STEEL	MFG APPR.	
		FINISH	Q.A.	
		ZINC PLATE CLEAR TRIVALENT CHROMATE PER SFS-01-001; SC1	COMMENTS:	
NEXT ASSY	USED ON		E-mail: info@sherex.com	
			www.sherex.com	
			Phone: 866-474-3739	
			Fax: 716-875-0358	
	APPLICATION	DO NOT SCALE DRAWING		



TITLE:
M6 CLOSED END LARGE FLANGE
OPTISERT

SIZE DWG. NO. REV
A OPT2-610-8.5BS A

SCALE: 3:2 WEIGHT: SHEET 1 OF 1