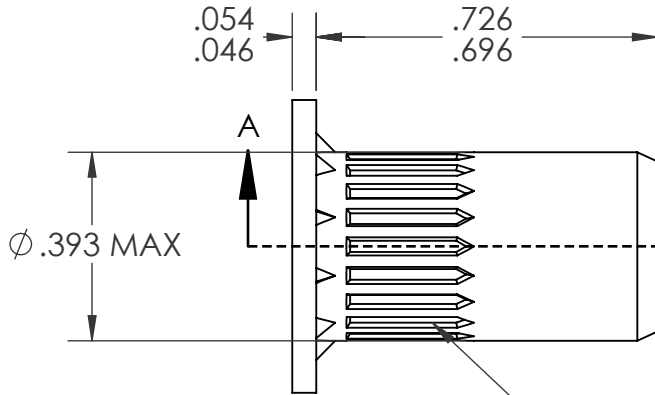
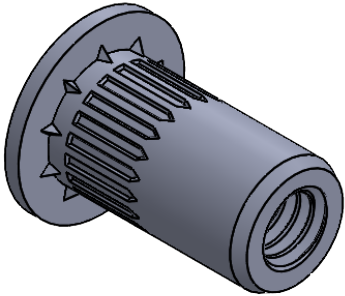
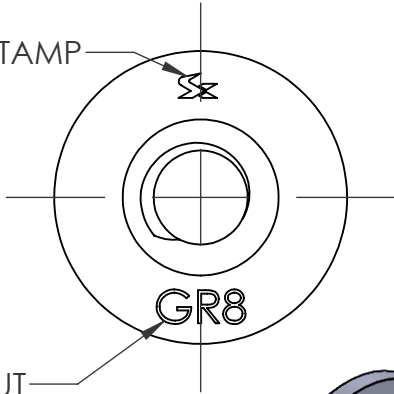


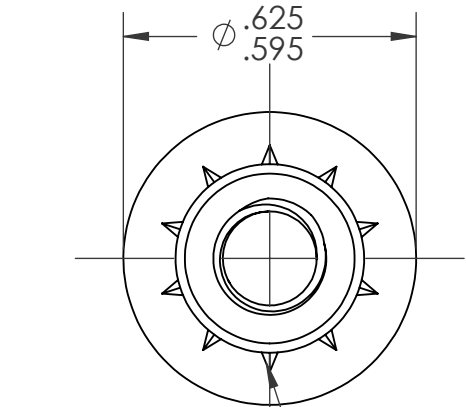
REVISIONS				
REV.	DESCRIPTION	DATE	ECN	INITIALS
A	INITIAL RELEASE	7/25/25	4680	JLC

SHEREX  
HEAD STAMP

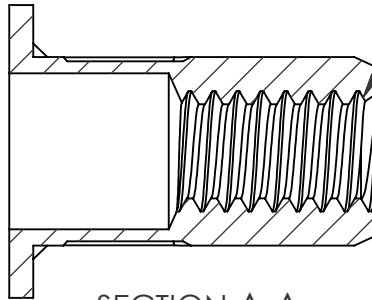
GRADE  
CALLOUT



AXIAL OPT KNURL



(10) HS WEDGES



1/4-20 UNC 2B  
PER ASME B1.1  
MINOR DIA.: .196- .207

SECTION A-A

- NOTE:
- GRIP RANGE: .060 - .138
  - HOLE SIZE: .394 +.006/-.000 AFTER ALL APPLIED FINISHES
  - INSTALLED LENGTH: .512 MAX
  - LUBRICATION: NONE
  - INSTALLATION TOOL: FLEX 5 SPIN PULL
  - THREAD MEETS GRADE 8 PROOF LOAD PER SAE J995: 5250LBF

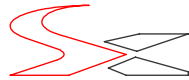
**PROPRIETARY AND CONFIDENTIAL**

THIS DRAWING, AND THE INFORMATION CONTAINED HEREIN, ARE THE PROPERTY OF SHEREX AND ARE NOT TO BE USED IN ANY MANNER DETRIMENTAL TO THE INTEREST OF THE COMPANY.

SHEREX SOLUTIONS RESERVES THE RIGHT TO REVISE PART/DRAWING WITHOUT NOTICE.

UNLESS OTHERWISE SPECIFIED, ALL SPECIFICATIONS REFERENCED ON THIS DRAWING WILL PERTAIN TO THE MOST RECENT AND ACTIVE REVISION.

		UNLESS OTHERWISE SPECIFIED:		NAME	DATE
		DIMENSIONS ARE IN INCHES TOLERANCES: ANGULAR: MACH±1 BEND ±1 TWO PLACE DECIMAL ±.01 THREE PLACE DECIMAL ±.005	DRAWN	JLC	5/28/25
		INTERPRET GEOMETRIC TOLERANCING PER: ASME Y14.5M-1994	CHECKED		
		MATERIAL	ENG APPR.	JVK	5/28/25
		10B21 STEEL	MFG APPR.		
		FINISH	Q.A.		
		ZINC PLATE CLEAR TRIVALENT CHROMATE PER SHEREX SFS-01-001, SC1	COMMENTS: E-mail: info@sherex.com www.sherex.com Phone: 866-474-3739 Fax: 716-875-0358		
NEXT ASSY	USED ON	DO NOT SCALE DRAWING			



TITLE:  
LARGE FLANGE ROUND BODY

SIZE DWG. NO.  
**A** RHS2-2520-138

REV  
A

SCALE: 5:2 WEIGHT:

SHEET 1 OF 1