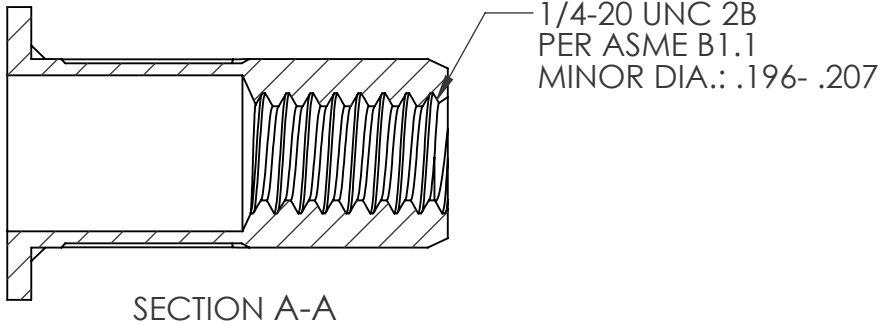
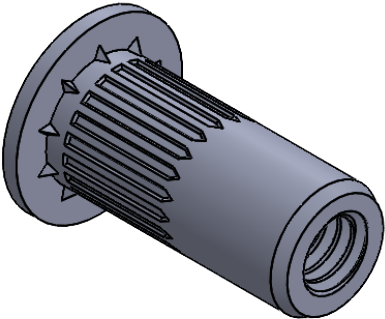
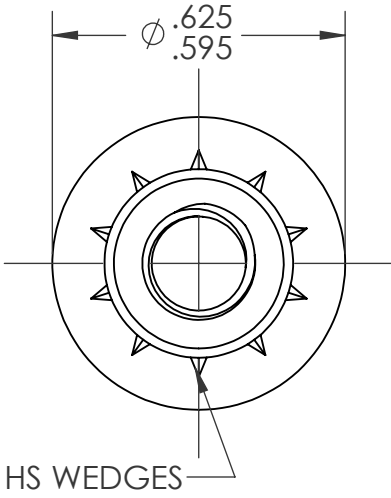
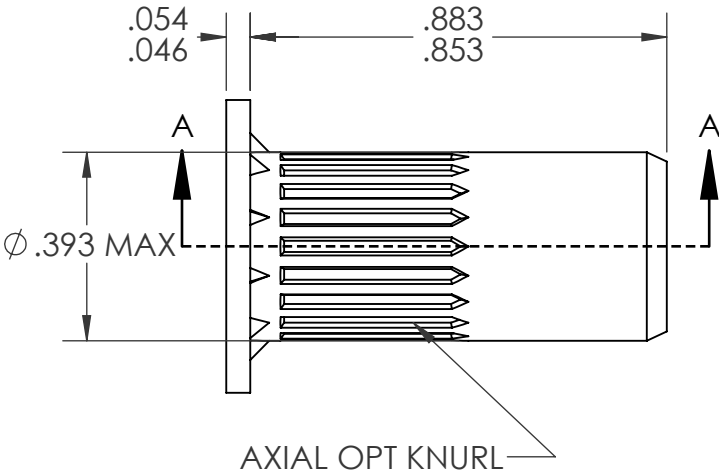
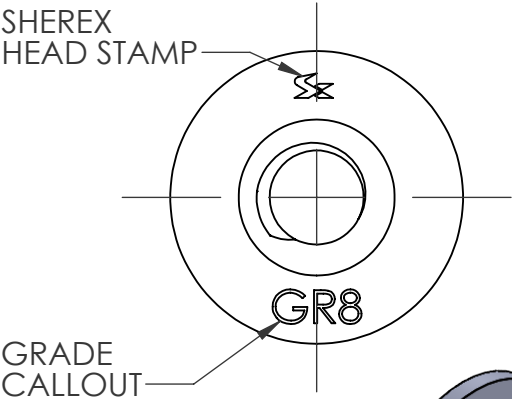


REVISIONS				
REV.	DESCRIPTION	DATE	ECN	INITIALS
A	INITIAL RELEASE	7/25/25	4680	JLC



- NOTE:
- GRIP RANGE: .217 - .296
 - HOLE SIZE: .394 +.006/-.000 AFTER ALL APPLIED FINISHES
 - INSTALLED LENGTH: .512 MAX
 - LUBRICATION: NONE
 - INSTALLATION TOOL: FLEX 5 SPIN PULL
 - THREAD MEETS GRADE 8 PROOF LOAD PER SAE J995: 5250LBF

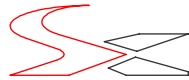
PROPRIETARY AND CONFIDENTIAL

THIS DRAWING, AND THE INFORMATION CONTAINED HEREIN, ARE THE PROPERTY OF SHEREX AND ARE NOT TO BE USED IN ANY MANNER DETRIMENTAL TO THE INTEREST OF THE COMPANY.

SHEREX SOLUTIONS RESERVES THE RIGHT TO REVISE PART/DRAWING WITHOUT NOTICE.

UNLESS OTHERWISE SPECIFIED, ALL SPECIFICATIONS REFERENCED ON THIS DRAWING WILL PERTAIN TO THE MOST RECENT AND ACTIVE REVISION.

		UNLESS OTHERWISE SPECIFIED:		NAME	DATE
		DIMENSIONS ARE IN INCHES TOLERANCES: ANGULAR: MACH ± 1 BEND ±1 TWO PLACE DECIMAL ±.01 THREE PLACE DECIMAL ±.005	DRAWN	JLC	5/28/25
		INTERPRET GEOMETRIC TOLERANCING PER: ASME Y14.5M-1994	CHECKED		
			ENG APPR.	JVK	5/28/25
			MFG APPR.		
		MATERIAL	Q.A.		
		10B21 STEEL	COMMENTS:		
			E-mail: info@sherex.com		
		FINISH	www.sherex.com		
		ZINC PLATE CLEAR TRIVALENT CHROMATE PER SHEREX SFS-01-001, SC1	Phone: 866-474-3739		
NEXT ASSY	USED ON		Fax: 716-875-0358		
APPLICATION		DO NOT SCALE DRAWING			



TITLE:

LARGE FLANGE ROUND BODY

SIZE	DWG. NO.	REV
A	RHS2-2520-296	A
SCALE: 5:2	WEIGHT:	SHEET 1 OF 1