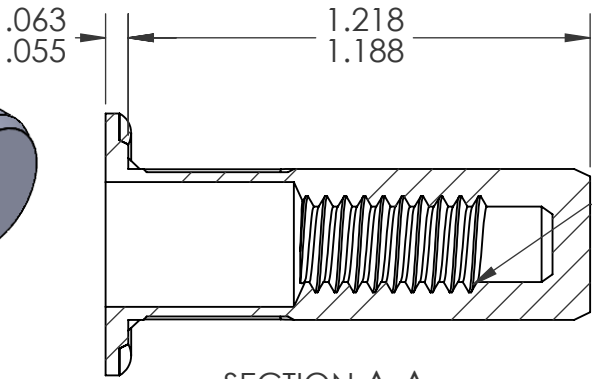
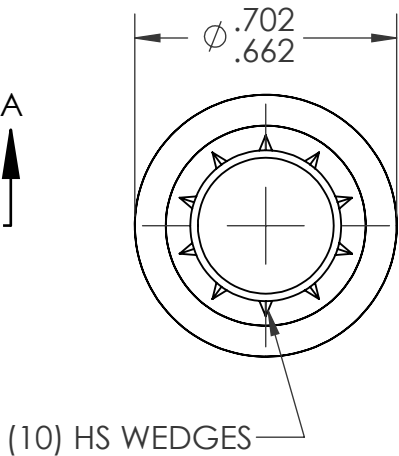
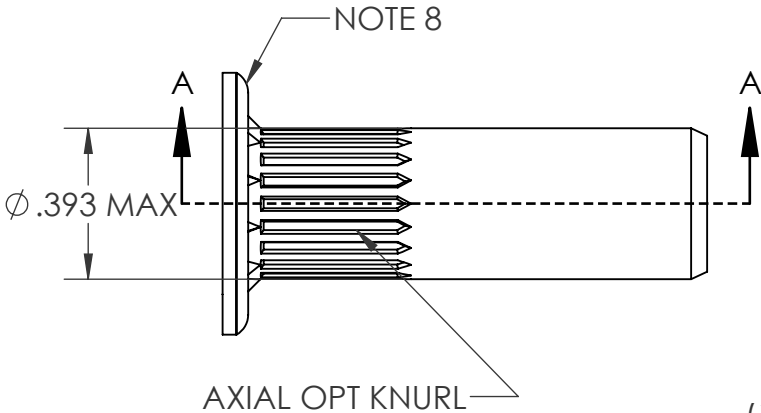
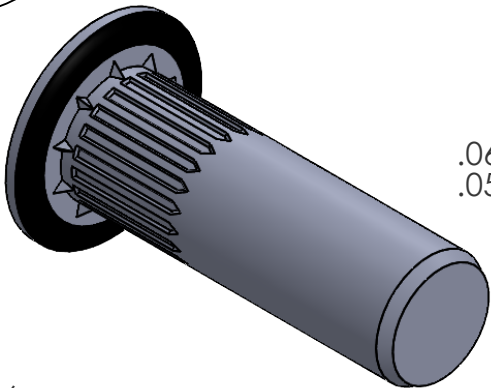
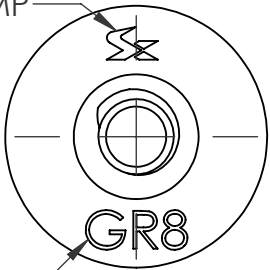


| REVISIONS | | | | |
|-----------|-----------------|---------|------|----------|
| REV. | DESCRIPTION | DATE | ECN | INITIALS |
| A | INITIAL RELEASE | 11/3/25 | 4707 | JLC |

SHEREX
HEAD STAMP

GRADE
CALLOUT



1/4-20 UNC 2B
PER ASME B1.1
MINOR DIA.: .196- .207

- NOTE:
- GRIP RANGE: .217 - .296
 - HOLE SIZE: .394 +.006/- .000 AFTER ALL APPLIED FINISHES
 - INSTALLED LENGTH: .846 MAX
 - INSTALLED THREAD DEPTH: .780 REF.
 - LUBRICATION: NONE
 - INSTALLATION TOOL: FLEX 5 SPIN PULL
 - THREAD MEETS GRADE 8 PROOF LOAD PER SAE J995: 5250LBF
 - DEPOSIT PLASTISOL ALONG OUTER GROOVE OF THE HEAD

PROPRIETARY AND CONFIDENTIAL

THIS DRAWING, AND THE INFORMATION CONTAINED HEREIN, ARE THE PROPERTY OF SHEREX AND ARE NOT TO BE USED IN ANY MANNER DETRIMENTAL TO THE INTEREST OF THE COMPANY.

SHEREX SOLUTIONS RESERVES THE RIGHT TO REVISE PART/DRAWING WITHOUT NOTICE.

UNLESS OTHERWISE SPECIFIED, ALL SPECIFICATIONS REFERENCED ON THIS DRAWING WILL PERTAIN TO THE MOST RECENT AND ACTIVE REVISION.

| | | | | | |
|-------------|---------|--|--|------|---------|
| | | UNLESS OTHERWISE SPECIFIED: | | NAME | DATE |
| | | DIMENSIONS ARE IN INCHES TOLERANCES: ANGULAR: MACH± 1 BEND ±1 TWO PLACE DECIMAL ±.01 THREE PLACE DECIMAL ±.005 | DRAWN | JLC | 5/28/25 |
| | | INTERPRET GEOMETRIC TOLERANCING PER: ASME Y14.5M-1994 | CHECKED | | |
| | | MATERIAL | ENG APPR. | JVK | 5/28/25 |
| | | 10B21 STEEL | MFG APPR. | | |
| | | FINISH | Q.A. | | |
| | | ZINC PLATE CLEAR TRIVALENT CHROMATE PER SFS-01-001, SC1 | COMMENTS: E-mail: info@sherex.com www.sherex.com Phone: 866-474-3739 Fax: 716-875-0358 | | |
| NEXT ASSY | USED ON | | | | |
| APPLICATION | | DO NOT SCALE DRAWING | | | |



TITLE:
LARGE FLANGE ROUND BODY

| | | |
|--------------|-----------------|----------|
| SIZE | DWG. NO. | REV |
| A | RHS2-2520-296BS | A |
| SCALE: 2:1 | | WEIGHT: |
| SHEET 1 OF 1 | | |