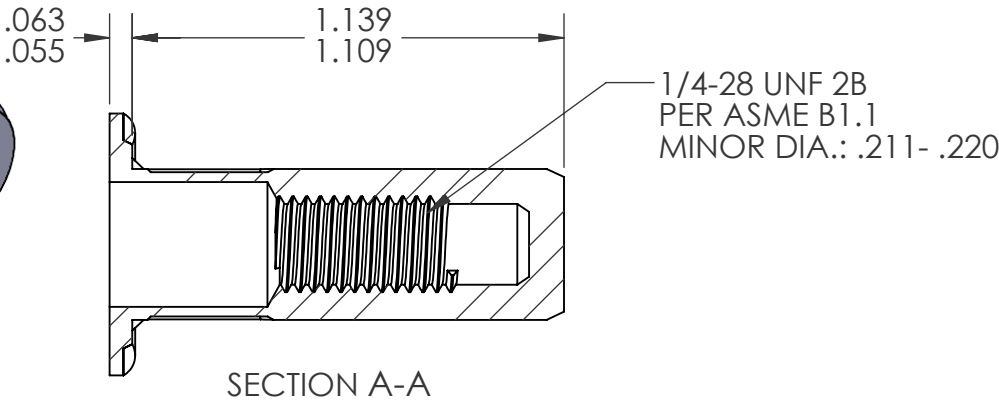
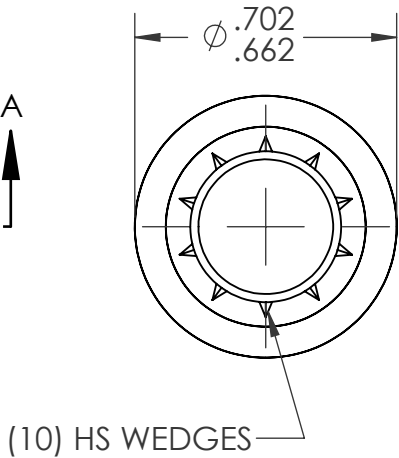
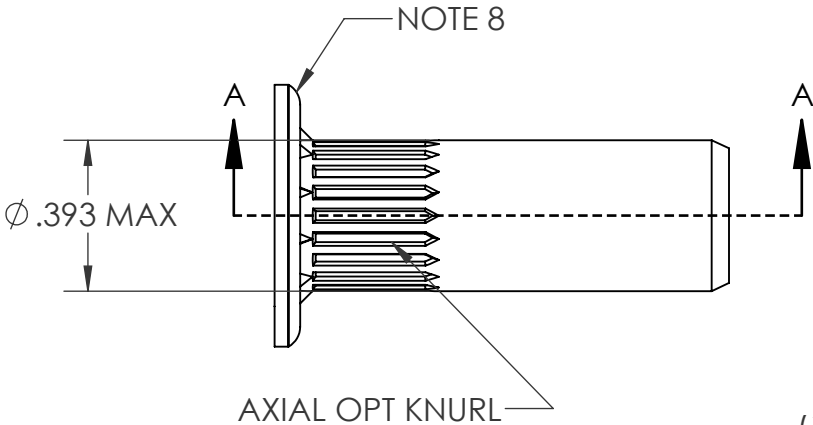
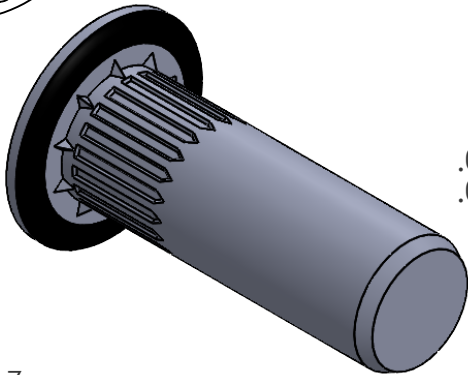
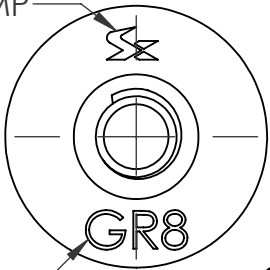


REVISIONS				
REV.	DESCRIPTION	DATE	ECN	INITIALS
A	INITIAL RELEASE	11/3/25	4707	JLC

SHEREX
HEAD STAMP

GRADE
CALLOUT



- NOTE:
- GRIP RANGE: .138 - .217
 - HOLE SIZE: .394 +.006/-0.000 AFTER ALL APPLIED FINISHES
 - INSTALLED LENGTH: .846 MAX
 - INSTALLED THREAD DEPTH: .700 REF.
 - LUBRICATION: NONE
 - INSTALLATION TOOL: FLEX 5 SPIN PULL
 - THREAD MEETS GRADE 8 PROOF LOAD PER SAE J995: 5460LBF
 - DEPOSIT PLASTISOL ALONG OUTER GROOVE OF THE HEAD

PROPRIETARY AND CONFIDENTIAL

THIS DRAWING, AND THE INFORMATION CONTAINED HEREIN, ARE THE PROPERTY OF SHEREX AND ARE NOT TO BE USED IN ANY MANNER DETRIMENTAL TO THE INTEREST OF THE COMPANY.

SHEREX SOLUTIONS RESERVES THE RIGHT TO REVISE PART/DRAWING WITHOUT NOTICE.

UNLESS OTHERWISE SPECIFIED, ALL SPECIFICATIONS REFERENCED ON THIS DRAWING WILL PERTAIN TO THE MOST RECENT AND ACTIVE REVISION.

		UNLESS OTHERWISE SPECIFIED:		NAME	DATE
		DIMENSIONS ARE IN INCHES TOLERANCES: ANGULAR: MACH ± 1 BEND ±1 TWO PLACE DECIMAL ±.01 THREE PLACE DECIMAL ±.005 INTERPRET GEOMETRIC TOLERANCING PER: ASME Y14.5M-1994	DRAWN	JLC	5/28/25
			CHECKED		
			ENG APPR.	JVK	5/28/25
		MATERIAL 10B21 STEEL	MFG APPR.		
			Q.A.		
			COMMENTS: E-mail: info@sherex.com www.sherex.com Phone: 866-474-3739 Fax: 716-875-0358		
NEXT ASSY	USED ON	FINISH ZINC PLATE CLEAR TRIVALENT CHROMATE PER SFS-01-001, SC1			
APPLICATION		DO NOT SCALE DRAWING			



TITLE:

LARGE FLANGE ROUND BODY

SIZE	DWG. NO.	REV
A	RHS2-2528-217BS	A
SCALE: 2:1	WEIGHT:	SHEET 1 OF 1