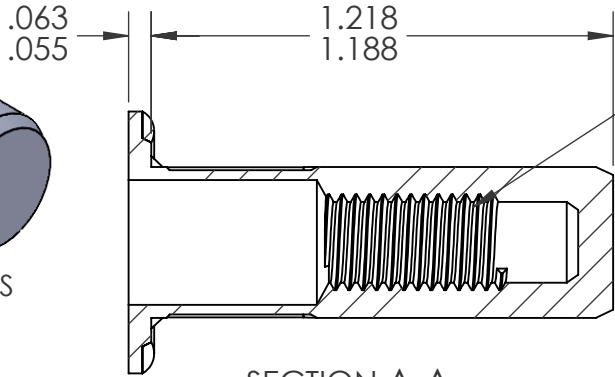
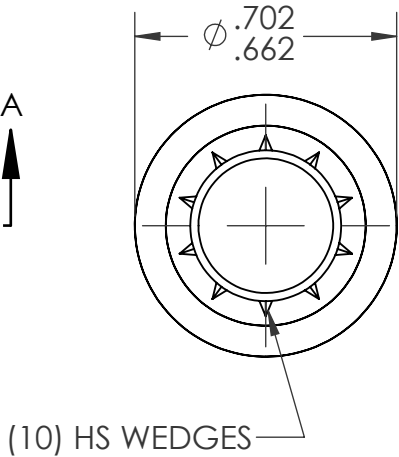
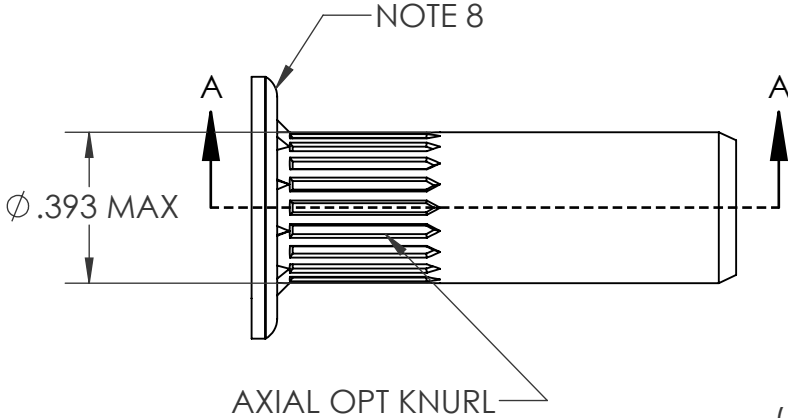
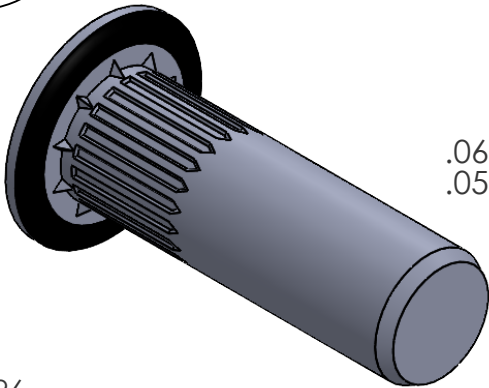
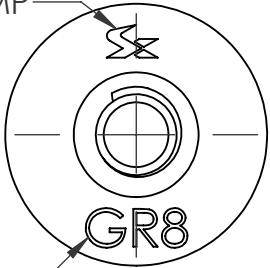


REVISIONS				
REV.	DESCRIPTION	DATE	ECN	INITIALS
A	INITIAL RELEASE	11/3/25	4707	JLC

SHEREX
HEAD STAMP

GRADE
CALLOUT



SECTION A-A

- NOTE:
- GRIP RANGE: .217 - .296
 - HOLE SIZE: .394 +.006/- .000 AFTER ALL APPLIED FINISHES
 - INSTALLED LENGTH: .846 MAX
 - INSTALLED THREAD DEPTH: .780 REF.
 - LUBRICATION: NONE
 - INSTALLATION TOOL: FLEX 5 SPIN PULL
 - THREAD MEETS GRADE 8 PROOF LOAD PER SAE J995: 5460LBF
 - DEPOSIT PLASTISOL ALONG OUTER GROOVE OF THE HEAD

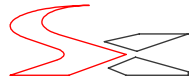
PROPRIETARY AND CONFIDENTIAL

THIS DRAWING, AND THE INFORMATION CONTAINED HEREIN, ARE THE PROPERTY OF SHEREX AND ARE NOT TO BE USED IN ANY MANNER DETRIMENTAL TO THE INTEREST OF THE COMPANY.

SHEREX SOLUTIONS RESERVES THE RIGHT TO REVISE PART/DRAWING WITHOUT NOTICE.

UNLESS OTHERWISE SPECIFIED, ALL SPECIFICATIONS REFERENCED ON THIS DRAWING WILL PERTAIN TO THE MOST RECENT AND ACTIVE REVISION.

		UNLESS OTHERWISE SPECIFIED:		NAME	DATE
		DIMENSIONS ARE IN INCHES TOLERANCES: ANGULAR: MACH± 1 BEND ±1 TWO PLACE DECIMAL ±.01 THREE PLACE DECIMAL ±.005	DRAWN	JLC	5/28/25
		INTERPRET GEOMETRIC TOLERANCING PER: ASME Y14.5M-1994	CHECKED		
		MATERIAL	ENG APPR.	JVK	5/28/25
		10B21 STEEL	MFG APPR.		
		FINISH	Q.A.		
		ZINC PLATE CLEAR TRIVALENT CHROMATE PER SFS-01-001, SC1	COMMENTS:		
NEXT ASSY	USED ON		E-mail: info@sherex.com		
			www.sherex.com		
			Phone: 866-474-3739		
			Fax: 716-875-0358		
APPLICATION		DO NOT SCALE DRAWING			



TITLE:

LARGE FLANGE ROUND BODY

SIZE	DWG. NO.	REV
A	RHS2-2528-296BS	A
SCALE: 2:1	WEIGHT:	SHEET 1 OF 1