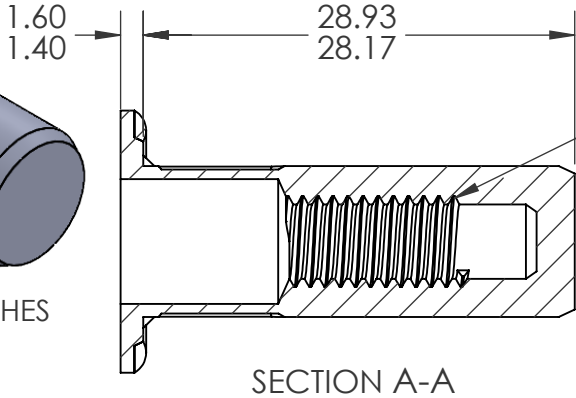
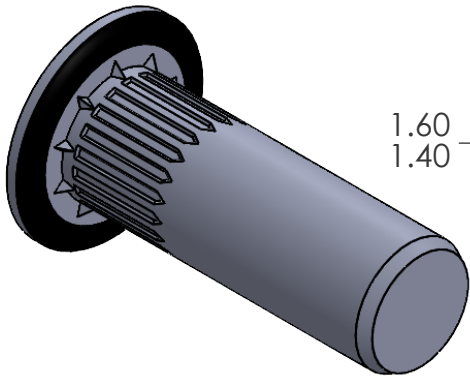
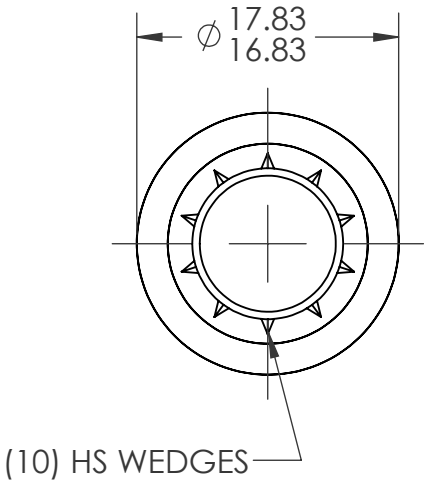
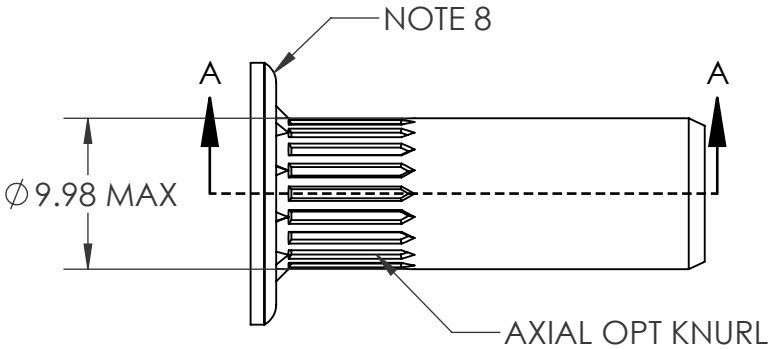
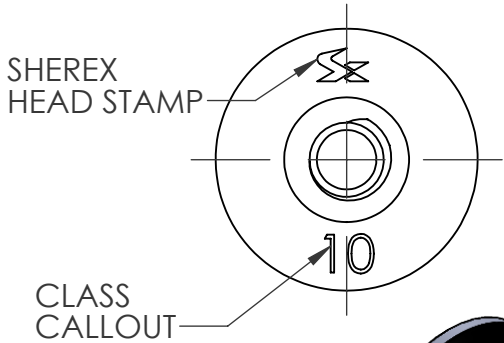


REVISIONS				
REV.	DESCRIPTION	DATE	ECN	INITIALS
A	INITIAL RELEASE	9/22/25	4707	JLC

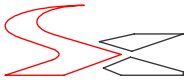


M6X1.0 6H  
PER ASME B1.13M  
MINOR DIA.: 4.92 -5.15

- NOTE:
- GRIP RANGE: 3.5 - 5.5
  - HOLE SIZE: 10.00 +0.15/-0.00 AFTER ALL APPLIED FINISHES
  - INSTALLED LENGTH: 21.50 MAX
  - INSTALLED THREAD DEPTH: 17.73 REF.
  - LUBRICATION: NONE
  - INSTALLATION TOOL: FLEX 5 SPIN PULL
  - THREAD MEETS CLASS 10 PROOF LOAD PER ISO 898-2: 20.9kN
  - DEPOSIT PLASTISOL ALONG OUTER GROOVE OF THE HEAD

**PROPRIETARY AND CONFIDENTIAL**  
THIS DRAWING, AND THE INFORMATION CONTAINED HEREIN, ARE THE PROPERTY OF SHEREX AND ARE NOT TO BE USED IN ANY MANNER DETRIMENTAL TO THE INTEREST OF THE COMPANY.  
SHEREX SOLUTIONS RESERVES THE RIGHT TO REVISE PART/DRAWING WITHOUT NOTICE.  
UNLESS OTHERWISE SPECIFIED, ALL SPECIFICATIONS REFERENCED ON THIS DRAWING WILL PERTAIN TO THE MOST RECENT AND ACTIVE REVISION.

		UNLESS OTHERWISE SPECIFIED:		NAME	DATE
		DIMENSIONS ARE IN MILLIMETERS TOLERANCES: ANGULAR: MACH ± 1    BEND ±1 ONE PLACE DECIMAL    ±0.3 TWO PLACE DECIMAL    ±0.08	DRAWN	JLC	5/27/25
			CHECKED		
		INTERPRET GEOMETRIC TOLERANCING PER: ASME Y14.5M-1994	ENG APPR.	JVK	5/27/25
			MFG APPR.		
		MATERIAL  10B21 STEEL	Q.A.		
			COMMENTS: E-mail: info@sherex.com www.sherex.com Phone: 866-474-3739 Fax: 716-875-0358		
NEXT ASSY	USED ON	FINISH  ZINC PLATE CLEAR TRIVALENT CHROMATE PER SFS-01-001, SC1			
APPLICATION		DO NOT SCALE DRAWING			



TITLE:  
LARGE FLANGE ROUND BODY

SIZE	DWG. NO.	REV
<b>A</b>	RHS2-610-5.5BS	<b>A</b>
SCALE: 2:1 WEIGHT:		SHEET 1 OF 1