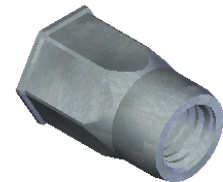


SECTION A-A

M5X0.8 6H
PER ASME B1.13M
MINOR DIA.: 4.13 - 4.33



NOTE:

1. GRIP RANGE: 0.5 - 3.0
2. HOLE SIZE: 7.0 +0.1/-0.0 A/F AFTER ALL APPLIED FINISHES.
3. INSTALLED LENGTH: N/A
4. INSTALLED THREAD DEPTH:
5. LUBRICATION: NONE
6. INSTALLATION TOOL: MS 50 SPIN PULL

PROPRIETARY AND CONFIDENTIAL
THIS DRAWING, AND THE INFORMATION CONTAINED HEREIN, ARE THE PROPERTY OF SHEREX AND ARE NOT TO BE USED IN ANY MANNER DETRIMENTAL TO THE INTEREST OF THE COMPANY.
SHEREX SOLUTIONS RESERVES THE RIGHT TO REVISE PART/DRAWING WITHOUT NOTICE.

| | | | | | | | | | |
|-------------|---------|--|---|------|---------|---|--|--|--|
| | | UNLESS OTHERWISE SPECIFIED: | | NAME | DATE |  | | | |
| | | DIMENSIONS ARE IN MILLIMETERS TOLERANCES: ANGULAR: MACH± 1 BEND ±1 ONE PLACE DECIMAL ±0.10 TWO PLACE DECIMAL ±0.05 | DRAWN | JVK | 3/11/08 | | | | |
| | | | CHECKED | | | | | | |
| | | INTERPRET GEOMETRIC TOLERANCING PER: ASME Y14.5M-1994 | ENG APPR. | JVK | 3/11/08 | TITLE: LOW PROFILE HEAD, HALF HEX | | | |
| | | MATERIAL 316 STAINLESS | MFG APPR. | TB | 8/25/08 | | | | |
| | | | Q.A. | | | | | | |
| | | FINISH PASSIVATE | COMMENTS: | | | SIZE DWG. NO. REV A TU-316M5HUKO30 A | | | |
| | | | E-mail: info@sherex.com www.sherex.com Phone: 866-474-3739 Fax: 716-875-0358 | | | | | | |
| NEXT ASSY | USED ON | | | | | SCALE: 2:1 WEIGHT: .0015 kg SHEET 1 OF 1 | | | |
| APPLICATION | | DO NOT SCALE DRAWING | | | | | | | |