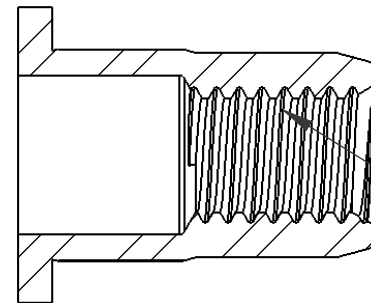
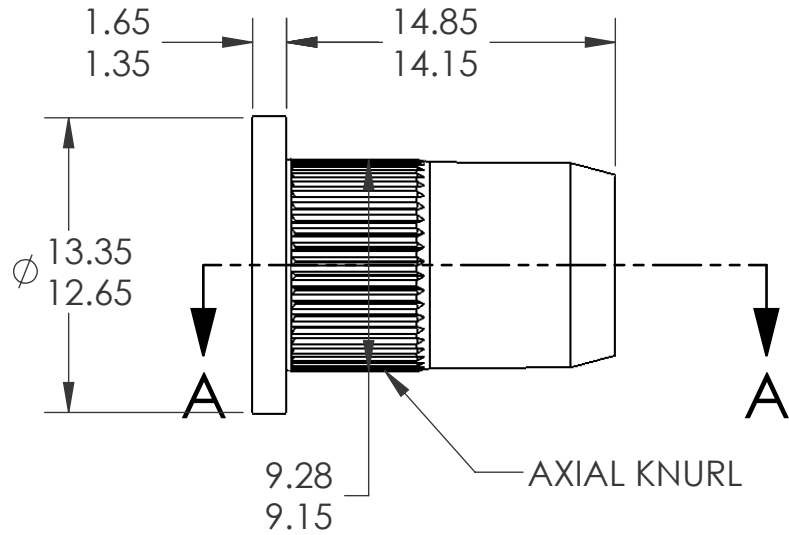
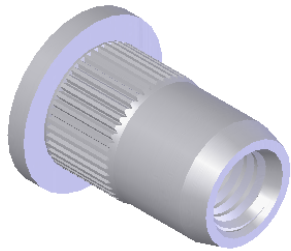
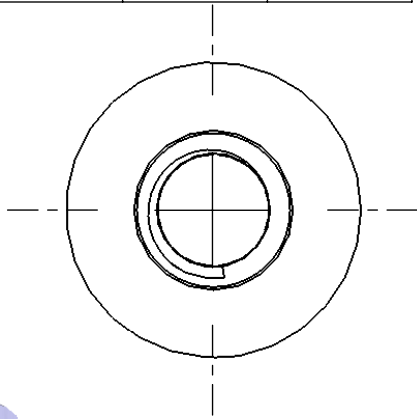


REVISIONS			
REV.	DESCRIPTION	DATE	ECN
A	INITIAL RELEASE	2/12/2014	1660




M6X1 6H  
PER ASME B1.13M  
MINOR DIA.: 4.92 - 5.15

SECTION A-A

NOTE:

- GRIP RANGE: 0.5 - 3.0
- HOLE SIZE: 9.4 +0.1/-0.0 AFTER ALL APPLIED FINISHES.
- INSTALLED LENGTH: N/A
- INSTALLED THREAD DEPTH:
- LUBRICATION: NONE
- INSTALLATION TOOL: FLEX 5P/5S SPIN PULL

		UNLESS OTHERWISE SPECIFIED:		NAME	DATE		
		DIMENSIONS ARE IN MILLIMETERS TOLERANCES: ANGULAR: MACH ± 1 BEND ± 1 ONE PLACE DECIMAL ± 0.10 TWO PLACE DECIMAL ± 0.05		DRAWN	JVK 3/14/08		
		INTERPRET GEOMETRIC TOLERANCING PER: ASME Y14.5M-1994		CHECKED			
		MATERIAL STEEL DIN QST 34-3		ENG APPR.	JVK 3/14/08		
		FINISH ZINKTOP CLEAR, RoHS COMPLIANT 96W/480P PER ASTM B633 Fe/Zn 8um TYPE II		MFG APPR.	TB 8/7/08	<b>TITLE:</b> <b>FLAT HEAD OPEN END</b>	
		NEXT ASSY		USED ON			
		APPLICATION		COMMENTS: E-mail: <a href="mailto:info@sherex.com">info@sherex.com</a> <a href="http://www.sherex.com">www.sherex.com</a> Phone: 866-474-3739 Fax: 716-875-0358		<b>SIZE DWG. NO.</b> <b>A TU-SM6UPO30RZT</b>	<b>REV</b> <b>A</b>
		DO NOT SCALE DRAWING		SCALE: 2:1		WEIGHT: .0044 kg	SHEET 1 OF 1

**PROPRIETARY AND CONFIDENTIAL**  
THIS DRAWING, AND THE INFORMATION CONTAINED HEREIN, ARE THE PROPERTY OF SHEREX AND ARE NOT TO BE USED IN ANY MANNER DETRIMENTAL TO THE INTEREST OF THE COMPANY.  
SHEREX SOLUTIONS RESERVES THE RIGHT TO REVISE PART/DRAWING WITHOUT NOTICE.