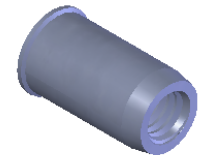


M4X0.7 6H
PER ASME B1.13M
MINOR DIA.: 3.24 - 3.42

SECTION A-A
SCALE 6 : 1



NOTE:

1. GRIP RANGE: 0.5 - 2.0
2. HOLE SIZE: 6.0 +0.1/-0.0 AFTER ALL APPLIED FINISHES.
3. INSTALLED LENGTH: N/A
4. LUBRICATION: NONE
5. INSTALLATION TOOL: MS 50 SPIN PULL

PROPRIETARY AND CONFIDENTIAL

THIS DRAWING, AND THE INFORMATION CONTAINED HEREIN, ARE THE PROPERTY OF SHEREX AND ARE NOT TO BE USED IN ANY MANNER DETRIMENTAL TO THE INTEREST OF THE COMPANY.
SHEREX SOLUTIONS RESERVES THE RIGHT TO REVISE PART/DRAWING WITHOUT NOTICE.

		UNLESS OTHERWISE SPECIFIED:		NAME	DATE
		DIMENSIONS ARE IN METRIC TOLERANCES: ANGULAR: MACH ± 1 BEND ± 1 ONE PLACE DECIMAL ± .5 TWO PLACE DECIMAL ± .25	DRAWN	TOO	6/14/07
		INTERPRET GEOMETRIC TOLERANCING PER: ASME Y14.5M-1994	CHECKED		
		MATERIAL	ENG APPR.	TOO	6/14/07
		302 STAINLESS	MFG APPR.	GW	6/14/07
		FINISH	Q.A.		
		PASSIVATE	COMMENTS:	E-mail: info@sherex.com www.sherex.com Phone: 866-474-3739 Fax: 716-875-0358	
NEXT ASSY	USED ON	DO NOT SCALE DRAWING			
APPLICATION					



TITLE:

LOW PROFILE OPEN END

SIZE DWG. NO.

A TU-SSM4UKO20

REV

SCALE: 2:1 WEIGHT: .0016 kg

SHEET 1 OF 1